

VALCOM

Easy Professional Loudspeaker Paging

Communi

Advanced Paging

VoIP Paging

2000 Hz

2000 Hz

2000 Hz

2000 Hz

Look for NEW Products Inside!



Horns, page 14-15
IP, page 21-23



Speakers, page 8-13
MultiPath, page 7, 19-20



In-Wall Modular Mixers, page 24



USB Multi-Messenger, page 26
Call-In Switches, page 25



Mesh Network Clock
Systems, page 28-29

Product Catalog

Made In USA

Valcom Paging is Essential to Every Business!

Valcom, the largest provider of telephone integrated paging systems in the world, knows and understands our customer's needs – we've been doing this for 30 years! It has always been our philosophy to listen to our customers and to provide the highest quality loudspeaker paging and telecommunication system enhancement products. That's why Valcom is the standard product offering for major telephone companies and the overwhelming choice of the Fortune 500 companies.

Valcom's extensive array of paging products are Made in the U.S.A. in our state-of-the-art facility in Roanoke, Virginia and can help you deliver

**The Right Message . . .
To the Right People . . .
At the Right Time!™**

**Warehouse,
Distribution Centers**



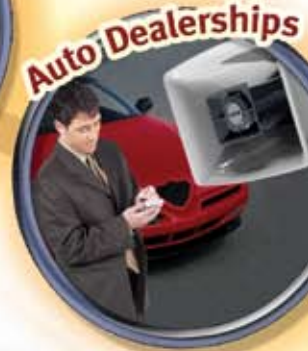
Offices



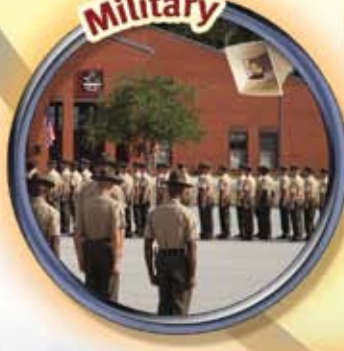
Retail



Auto Dealerships



Military



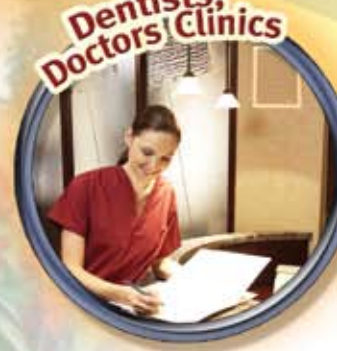
Manufacturing



Hospitals



**Dentists,
Doctors, Clinics**



VALCOM

VALCOM

Index



Real Time Voice Announcements Instantaneously Provide Critical Information and Clear, Concise Directions in Emergencies to Large Numbers of People!

Valcom systems broadcast emergency information and evacuation/relocation directives through loudspeakers, horns, visual signs and strobe lights conveniently installed in all areas where people may be located, both indoors and outdoors. Valcom systems allow critical information to be distributed faster and more completely than any other method of notification.

Alert & Evacuation Tones

Integrate emergency tones over your paging system for the most effective way to provide instantaneous advisement of fires, tornadoes, chemical leaks, etc. Assign distinctive tones to specific situations or levels of danger to provide an efficient and cost effective way to protect your most valuable asset — your skilled work force.

All Call Emergency Paging

Simultaneously broadcast live announcements through all speakers in the system. Real time voice is the most efficient way to disseminate critical information that can save lives and minimize injury.

Voice Over Internet Protocol VoIP

Extend paging signal or telephone and intercom conversations over LAN/WAN to connect remote buildings and complexes.

Battery Back-Up

Continue to page during a power failure. This important and cost effective option allows communication with employees while power is out.

Employee Alarm Systems

All call paging and priority system paging access for emergency message distribution provides the needed functionality to alert employees during workplace or natural disasters.

Multiple Building Paging (Over Existing Premise Wiring)

Network multiple buildings together to create one system for facility wide voice notification. Valcom paging systems can be networked using spare phone wiring already installed or may be linked through any customer LAN/WAN data network to provide connectivity without having to trench or install new cabling.

	Page #
Easy As 1-2-3 Design Steps.....	4-5
Step 1 Page Controls	
Analog Page Controls.....	6-7
2000 Series One-Way Page Controls.....	6
DualPath (+Accessories); MultiPath One-Way Page Controls.....	7
Station Level/FXS Adapters.....	7
Step 2 Speakers & Horns	
Ceiling Speakers (One-Way & Talkback).....	8-9
Wall, Corner, Track & Pendant Speakers.....	10-11
High-Fidelity Signature Series.....	12
Specialty Speakers.....	13
Horn Speakers (One-Way & Talkback).....	14-15
Step 3 Power Supplies	
Power Supplies.....	16-17
Intercom Systems	
Door Entry Intercoms.....	18
Doorplate Speakers.....	18
DualPath; MultiPath Intercoms.....	19
MultiPath Speakers & Accessories.....	20
VoIP Technology	
IP Solutions.....	21
SIP Paging.....	22-23
System Enhancements	
In-Wall Modular Mixer.....	24
Music.....	25
Paging Expanders.....	25
Call-In Switches.....	25
Speaker Volume Controls.....	25
Stored Message/Mic Panel.....	26
Microphones.....	26
Message-On-Hold.....	26
Feedback Elimination.....	26
Strobes, Ringers & Tones.....	27
Clocks (+Accessories).....	28-29
Index/Information	
Quick & Easy Product Index.....	30-33
Numerical Index.....	34
Glossary, Company Info.....	35

Paging Technology for Telephone/Datacom

Valcom's Distributed Amplified Technology was designed specifically for the telephone/datacom world! Each one-way paging speaker provides a built-in amplifier and volume control. These speakers are essentially independent public address systems that can be networked together in a building block concept that allows easy system configuration and flexible modification as customer needs change.

Best of all, these speakers are networked together using standard telephone/datacom low voltage wiring (CAT 5/6). This technology allows customers to take advantage of in-place wiring and assures the value of new wiring which can be used for future generations of paging, telephone and datacom systems. Traditional 70 volt systems MUST use shielded wiring to prevent serious consequences from high voltage, high frequency signals radiating into datacom and telephone circuits.

Valcom offers significantly higher system efficiency and superior response by optimizing each amplifier/speaker combination. Utilizing high efficiency American made speaker components eliminates transformer power losses characteristic of 70 volt systems. The net result is a reduction in cost, power dissipation and a dramatic increase in system efficiency and reliability due to the inherent system redundancy.



What is a Zone?

A zone can be any area, any size that you determine. It's usually an area where the same overhead pages would need to be heard.

Within a zone you can have as many different types of speakers as you want. From basic overhead round ceiling speakers, to high-fidelity sound, to horns for water-proof areas, to door entry speakers and many more.

One Zone — Multiple Rooms



Multiple Zones — Multiple Rooms



Step 1 Select A Page Control

Page Controls are the "Brain" of the system, much like the CPU (Central Processing Unit) of a computer system and are specifically designed for telephone system integration. Systems are easily field expandable and/or upgradable to allow for future adds, moves and changes.



Step 2 Select Speakers

Speakers are generally used for interior environments and provide high quality music and voice reproduction. It's easy to use hundreds of one-way speakers in a zone.

Horn Speakers offer high-efficiency, rugged construction and superb voice quality. They're typically used outdoors or in loud, industrial or harsh interior areas. It's easy to use hundreds of one-way speakers in a zone.

Custom Colors

Look for this symbol & call Valcom to get custom color speakers.



Step 3 Select A Power Supply

Built-in power is often included in the Page Control, so an additional Power Supply may not be needed. The amount of power required for a paging system is based on the quantity and type of Page Control and Speakers/Horns selected.

Designing a System Is Easy As 1-2-3

Page Control

Easy Selection Considerations:

- Number of Zones
- One-Way Broadcast Only
- or Talkback Two-Way HandsFree (Includes One-Way)
- Special Features

Model #	One-Way Page Controls						Talkback Page Controls			
	V-2000A	V-2001A	V-2003A	V-2006A	DualPath	MultiPath	V-2003AHF	V-2006AHF	DualPath	MultiPath
Number of Zones	1	1	3	6	24+	24+	3	6	24+	24+
Background Music	•	•	•	•	•	•	•	•	•	•
All Call	•	•	•	•	•	•	•	•	•	•
Group Call				•	•	•		•	•	•
Emergency Page Override		•	•	•	•	•	•	•	•	•
Night Ring/Time Clock Tones		•	•	•	•	•	•	•	•	•
Valcom Power Units Provided	+ 12	+ 20	+ 20	+ 30	0	0	+ 10	+ 20	0	0
PBX Loop Start Trunk Port	•	•	•	•	•	•	•	•	•	•
Electronic Key Line Position	•	•	•	•	•	•	•	•	•	•
Dedicated Single Line Phone Set										
PBX Ground Start Trunk Port			•	•			•	•		
Page Port (Telephone System Dependant)	•	•	•	•			•	•		
Centrex or C.O. Line										
PBX Analog Station Port (Loop Disconnect Required)	Use V-9970		Use V-9970		Ask Us!	Expand to 360 Zones! Ask Us!	Add V-9940		Ask Us!	Expand to 360 Zones! Ask Us!

Look for These Orange Symbols When Selecting Page Controls

Speakers & Horns

Easy Selection Considerations:

- One-Way or Talkback
- Indoor, Outdoor or Industrial Environments
- Area to be Paged in Square Feet
- Determine Ceiling Heights & Type
- Noise Levels
- Style, Decor & Color

Speaker /Horn Placement Guide					
Shows SPACE Between Horns & Square Foot Coverage PER Horn					
Speakers	Horns	Quiet	Moderate	Noisy	Very Noisy
		50-65dB	65-80dB	80-90dB	90+dB
5-Watt		110' (12,000sq.ft.)	80' (6,400sq.ft.)	50' (2,500sq.ft.)	30' (900sq.ft.)
15-Watt		-	-	75' (5,600sq.ft.)	45' (2,000sq.ft.)
30-Watt		-	-	-	60' (3,600sq.ft.)

Speakers: Ceiling Height x 2 = Speaker Placement
Example: 8' Ceiling x 2 = Space Speakers 16' Apart
Horns: Wall Speaker Placement
 Spaced 20' Apart (One Per 600 sq. ft.)

Power Pair Run									
# of Speakers/Horns Per Power Run					Power Run Wire Length in Feet				
# Interior Speakers	Signature Series™	Flex Horns	5-Watt Horns	15/30-Watt Horns	24 AWG	22 AWG	20 AWG	18 AWG	16 AWG
4	1	-	-	-	1000'	1600'	2500'	4000'	6400'
7	2	1	1	-	500'	800'	1280'	2025'	3220'
15	4	2	2	-	250'	400'	640'	1010'	1610'
30	8	4	4	1	125'	200'	320'	500'	805'

Power Supply

Easy Selection Considerations:

- Products Provide or Consume Power & are Assigned a Valcom Power Unit (VPU)

Power Provided or Power Consumed

+ #

- #

Valcom Power Units Make It Easy!						
Simply Total All:	Example:					
a. Page Control VPU's	Page Control	1 x	+30	=	+ 30	VPU Provided
b. Speaker/Horn VPU's	Speakers	15 x	- 1	=	- 15	VPU Consumed
c. Subtract b. from a.				=	+ 15	VPU's LEFT OVER
						NO Power Supply Needed!
						• Have VPU's Left Over - You Can Add More Speakers!
						• Need More - Simply Select a Power Supply Pg 16-17 with Enough VPU's to Make up the Difference!
						• Products that Neither Consume NOR Provide Power are a 0
						• Note: One Valcom Power Unit = 50mA., -24 Vdc
						• VPU Listings are on the Product Pages & Index Pg 30-34

The Bigger the System . . .
The Greater the Savings . . .
with Valcom!™

VALCOM

Step 1

Select A Page Control

Page Controls are the "Brain" of the system, much like the CPU (Central Processing Unit) of a computer system and are specifically designed for telephone system integration. Systems are easily field expandable and/or upgradable to allow for future adds, moves and changes.

Easy Selection Considerations:

● Zones

An area of any size that can be paged independently. If a warehouse is a separate zone than an office area, each area can be paged independently or simultaneously.

● One-Way

Broadcast Only

OR

Talkback

Two-Way HandsFree (Includes One-Way)

● Special Features:

All Call - Providing one page announcement to all speakers.

Background Music - Background music broadcast via a public address system.

Emergency Page Override - Urgent announcements take precedence over general ones.

Group Call - Combine individual zones so the same page announcement is broadcast to all selected zones.

Tone Generator Built-In For:

Clock Tones - Tones broadcast over paging system for a shift start, end, or break time.

Night Ring/UNA Tones - Tones that broadcast after hours, to indicate an incoming call.

● Telephone Access Method:

◆ PBX Loop Start Trunk Port
Electronic Key Line Position
Dedicated Single Line Phone Set

■ PBX Ground Start Trunk Port

▲ Page Port (Telephone System Dependent)

● Centrex or C.O. Line
PBX Analog Station Port (Loop Disconnect Required)

What are those little numbers in circles & squares? See Step 3 Pg 16

Call our Tech Support for
24/7 Layout Assistance.
800-825-2661

Analog Page Controls

One-Way Telephone System Integration

2000 SERIES PAGE CONTROLS

The Only Page Controls with Built-In Power & Loaded w/Features!

- Background Music Mutes Only in Zone Being Paged
- Emergency Page Override for Priority Announcements (Not on V-2000A)
- Unlimited Expansion
- Features Programmable Per Zone
- Built-In Tone Generator for Night Ring, Time Clock Tone, Door Bell (Not on V-2000A)
- Alert Tones (An Option on Talkback Only)
- Battery Back-Up Input (Not on V-2000A) **VPB-260 Pg 17**
- UL, CSA, CE (CE Not on V-2000A)

Specifications: Input Impedance: 600 ohms Music Input Level: -10dBm nominal Power Requirements: 120Vac 230Vac Models Available (Not on V-2000A) Add "E" Suffix to Part # Ex: V-2006AHF-E

1 Zone

One-Way ◆▲.....V-2000A +12

Specifications: DC Output: -24Vdc @ 600mA
2.6"H x 7.75"W x 5.8"D (6.6cm x 19.68cm x 14.73cm) 3.4 lbs (1.54 kg)

1 Zone Enhanced

One-Way ◆▲.....V-2001A +20

- Phantom Zone™ Allows Paging to All Speakers But Limits Music to Selected Speakers

Specifications: DC Output: -24Vdc @ 1A
7.1"H x 9.0"W x 2.4"D (18.03cm x 22.86cm x 6.12cm) 5.3 lbs (2.41 kg)

3 Zone

One-Way ◆■▲.....V-2003A +20

- One-Way All Call (Page All Zones)
- Pulse & Tone Dial

Specifications: DC Output: -24Vdc @ 1A
7.15"H x 10.0"W x 3.0"D (18.16cm x 25.4cm x 7.62cm) 6.0 lbs (2.72 kg)

Optional Plug-In Talkback Card V-9953 -10

Make Your Installed V-2003A a TALKBACK Page Control!

Two Talkback Speakers Allowed Per Zone

Talkback ◆■▲.....V-2003AHF +10

Specifications: DC Output: -24Vdc @ 500mA 6.5 lbs (2.95 kg)

6 Zone

One-Way ◆■▲.....V-2006A +30

- One-Way All Call (Page All Zones)
- Pulse & Tone Dial

- 3 Programmable Zone Groups

Specifications: DC Output: -24Vdc @ 1.5A
10.9"H x 13.0"W x 2.7"D (27.68cm x 33.02cm x 6.85cm) 10 lbs (4.54 kg)

Optional Plug-In Talkback Card V-9956 -10

Make Your Installed V-2006A a TALKBACK Page Control!

Two Talkback Speakers Allowed Per Zone

Talkback ◆■▲.....V-2006AHF +20

Specifications: DC Output: -24Vdc @ 1.5A 8.2 lbs (3.72 kg)

9 Zones One-Way All Call ◆.....V-1109RTVA -6

Specifications: Input Impedance: 600 ohm; Music Input Level: -10dBm Power Requirements: -24Vdc, 310mA
7.1"H x 5.9"W x 2.1"D (18.03cm x 14.98cm x 5.33cm) 3.5 lbs. (1.59 kg.)

Analog Page Controls

One-Way Telephone System Integration

Step 1

DualPath

1 Intercom Path • 1 Program Path

Perfect Solution for Schools, Industrial, Auto Dealerships, etc.

- Communication Path
- Program Path
- All Call/Group Call/ Emergency Override All Call
- Background Music Input
- UL, CSA, CE
- Class of Service/Zone
- Door Unlock Control
- SMDR Printer Port
- Tone Inputs
- Caller ID

DualPath V-2924A™

Easy Remote Programming

MultiPath VALCOM



MultiPath

NEW

Perfect Solution for Hospitals, Industrial, Airports, and Any Environment Requiring Multiple Simultaneous Paging!

- User-Friendly Admin Software Easily Manages Voice Communication
- LAN/WAN Access • UL, CSA, CE

Wall Mount ♦ V-2924A ①

17.5"H x 10.31"W x 3.06"D
(44.45cm x 26.19cm x 7.77cm) 17.5 lbs (7.95 kg)

24 Zones

Wall Mount ♦ V-Pw24 ①

Rack Mount ♦ V-PR24 ①

See Website for Dimensions & Weights

Expand in 24 Zone Increments

Wall Mount ♦ V-2925A ①

(Add 1 V-2925A to Your V-2924A for 48 Zones)
17.5"H x 8.37"W x 3.06"D (44.45cm x 21.26cm x 7.77cm)
13.5 lbs (6.13 kg)

48 Zones

Wall Mount ♦ V-Pw48 ①

Rack Mount ♦ V-PR48 ①

Wall Mount ♦ V-2925A ①

(Add 2 V-2925A's to Your V-2924A for 72 Zones)

72 Zones

Rack Mount ♦ V-PR72 ①

Wall Mount ♦ V-2925A ①

(Add 3 V-2925A's to Your V-2924A for 96 Zones)

96 Zones

Rack Mount ♦ V-PR96 ①

V-2924A Accessories

Option Card V-2926 ①
(Enhanced Caller ID, Programmable Dial Codes, User Defined Page Groups)

Option Card w/Time Event Scheduler..... V-2928 ①
(For Computer Requirements See www.valcom.com)

Power Requirements: 120 Vac or 230Vac/ 1A Versions (Add "-E" to part #'s)
5.3"H x 3.0"W x 1.1"D (13.46cm x 7.62cm x 2.79cm) 1.3 lbs (.59 kg)

Clock Relay Card V-CIO ①

Clock Control Card for V-2924A V-2927 ①

Clock Correction Kit V-CLK2924 ①



Software-Driven Paging Provides Flexibility

Easy Remote Programming!

Expand Up To 360 Zones

Call to See How Easy It Is to Do LARGER Systems!
See Page 20 for 24 Zone Expansion Card V-STX.

MultiPath Intercoms, Speakers & Accessories! - Pages 19-20

Station Level/FXS Adapters

NEW

Digital 1 Zone One-Way Page Adapter V-9970 - ④

May be used with V-2003AHF/V-2006AHF for Multi-Zones

Specifications: Input Impedance: 600ohm Music Input Level: -10 — 18dBm Power Requirements: -24Vdc or -12Vdc, 400mA
8.2"H x 4.55"W x 2.3"D (20.82cm x 11.55cm x 5.84cm) 2.0 lbs (.91 kg) UL

Expandable Station Page Adapter V-9940 - ④

May be used with V-2003AHF/V-2006AHF for Talkback Multi-Zones

Specifications: Input Impedance: 600ohm Music Input Level: -10 — 18dBm Power Requirements: -24Vdc, 200mA
8.2"H x 4.55"W x 2.3"D (20.82cm x 11.55cm x 5.84cm) 2.0 lbs (.91 kg) UL

PagePal™ Interface V-5335700 ①

- Interfaces Virtually Any Phone System to Public Address System
- Attendant Access Override from a Zone Microphone or Page Port
- Music Input w/Level Control
- Tones Include Night Bell, Alerts, Page Confirmation, Busy & Pre-Announcement • Power Supply Included

2.50"H x 6.00"W x 4.00"D (6.35cm x 15.24cm x 10.16 cm) 2.00 lbs (0.90 kg)



VALCOM

Step 2

Select Speakers

Speakers are generally used for interior environments and provide high quality music and voice reproduction. It's easy to use hundreds of one-way speakers in a zone. Large numbers of speakers simply require additional power – see Step 3 Pg 16.

Valcom Speakers Are Unique!

- Convenient Built-In Amplifier w/Volume Control (One-Way Speakers Only)
- Designed for Excellent Voice Paging & Background Music
- Easily Utilizes Standard CAT 5/6 Cable
- Convenient Screw Connections
- Match Any Decor w/Custom Colors

Easy Selection Considerations:

- One-Way or Talkback
- Indoor, Outdoor or Industrial Environments
- Area to be Paged in Square Feet
- Determine Ceiling Heights & Type
- Noise Levels
- Style, Decor & Color

Speaker Placement:

Ceiling Height x 2 = Ceiling Speaker Placement

Example: 8' Ceiling x 2 = Space Speakers 16' Apart

Power Pair Run: Power Run Wire Length in Feet

# Interior Speakers	24 AWG	22 AWG	20 AWG	18 AWG	16 AWG
4	1000'	1600'	2500'	4000'	6400'
7	500'	800'	1280'	2025'	3220'
15	250'	400'	640'	1010'	1610'
30	125'	200'	320'	500'	805'

Our Tech Support is One of The Best in the Industry, Call Us to Discuss Your Specific Environment Needs!
800-825-2661

Ceiling Speakers



A. P-Tec™ Ceiling Speaker V-1001

Easy Installation

Custom Colors

B. Lay-In 2' x 2' Ceiling Speaker™ V-9022

► P-Tec™ Ceiling Speaker

Easy Push/Lock Speaker Installs in Tile Ceilings

- Great for Open Offices Where Speaker Relocation is Made Easier
- Side Dispersion Angle
- Lightweight, Easy to Mount & Move
- External Volume Control (One-Way Only)

8" Dia x 2.5"D (20.32cm x 6.35cm) 1.4 lbs (.63 kg)

- A. One-Way..... V-1001 - ①
Talkback..... V-1070 ①

► 2' x 2' Lay-In Ceiling Speakers™ w/Backbox

Easy Lay-In Installation Replaces a 2' x 2' Tile

- Lightweight - Weighs Slightly More Than a 2' x 2' Ceiling Tile!
- Inconspicuous Front Access Volume Control (One-Way Only)
- Save Time, Effort & Money - Get On & Off the Job Quickly
- Durable White Acrylic Baked Enamel Finish
- No Cutting Tiles, No Broken Tiles, No Mess
- Excellent Music & Voice Quality
- Integral Backbox Meets or Exceeds ASTM E84 Flame & Smoke Test w/ 3 Hour Burn Rating (UL 181)

- B. 2' x 2' One-Way w/Backbox...UL, CSA, CE..... V-9022 - ①
European Version: 600mm x 600mm 2.49 kg...UL, CSA, CE..... V-9022-EC - ①
2' x 2' Talkback w/Backbox..... V-9062 ①
2' x 2' Dual-Input (One-Way) w/Backbox..... V-9028 - ①
23.75"L x 23.75"W x 3.75"D (60.32cm x 60.32cm x 9.52cm) 5.5 lbs (2.48 kg)



Fastest, Easiest Speaker to Install!



Ceiling Speakers

Step 2

Industry Recognized
for
Exceptional Performance



C. V-1010C Custom Colors D. V-1020C

NEW Custom Colors



E. Clean Room Speaker V-1040

Upscale Look
for
Contemporary Interiors



F. V-1011-MR V-1012-BB

NEW Custom Colors



G. V-1920C



I. Vandal-Resistant Ceiling Speaker V-9010-W

H. Optional Backbox

White Ceiling Speakers CE

- C. **4" One-Way** Pop-On/Pop-Off Volume Knob V-1010C - ①
7.65" Dia x 2.9"D (19.43cm x 7.36cm) 2.4 lbs (1.09 kg)
- D. **8" One-Way** Pop-On/Pop-Off Volume Knob V-1020C - ①
- 8" Dual-Input** (One-Way) V-1220 - ①
13.0" Dia x 3.0"D (33.0cm x 7.6cm) 3.8 lbs (1.73 kg)
- 8" Talkback** V-1060A ①
- 8" Talkback w/LED** V-1060B ①
13.0" Dia x 2.5"D (33.0cm x 6.35cm) 3.7 lbs (1.68 kg)

NEW

Square Ceiling Speaker CE

- G. **8" One-Way** Pop-On/Pop-Off Volume Knob V-1920C - ①
- 8" Talkback** 4 Volume Levels V-CTSQPK ①
11.5"L x 11.5"L x 3.0"D (29.21cm x 29.21cm x 7.62cm) 3.75 lbs (1.69 kg)
- **Optional Square Speaker Backbox:** (Metal) N/A
- H. **Surface Mount Backbox** V-1991 **Flush Mount Backbox** V-1992
10.62"L x 10.62"L x 4.0"D 10.75"L x 10.75"L x 3.75"D
(26.97cm x 26.97cm x 10.61cm) 6.0 lbs (2.7 kg) (27.31cm x 27.31cm x 9.53cm) 2.75 lbs (1.24 kg)

Surface Mount Vandal-Resistant Ceiling Speaker CE

- I. **One-Way** V-9010-W - ①
- Ideal for Concrete Ceilings & Harsh Areas: Correctional Institutions, Outside Entrances, Industrial Areas*
- Steel Security Screen/Housing w/Tamper-Resistant Screws Prevents Objects from Penetrating Speaker
- 8.56" Dia x 5.13"H (21.74cm x 13.0cm) 4.8 lbs (2.16 kg)

NEW

Clean Room Ceiling Speaker CE

- E. **8" One-Way** V-1040 - ①
- Designed for Applications Where Concentration of Airborne Particles is Controlled. For Areas Such as Pharmaceutical, Medical & Other Critical Manufacturing Environments*
- Large Rubber O-Ring to Seal the Grille to the Ceiling
 - Rubber Washers for All Mounting Hardware
 - Polycarbonate Dust Shield Between the Speaker & the Grille
- 13" Dia x 3.0"D (33.02cm x 7.62cm) 2.5 lbs (1.13 kg)

Recessed Ceiling Speakers CE

- F. **4" One-Way** w/Mounting Ring & Rails V-1011-MR - ①
7.80" Dia x 5.0"D (19.81cm x 12.7cm) 4.3 lbs (1.95 kg)
- 8" One-Way** w/Backbox & Rails V-1012-BB - ①
11.75" Dia x 6.0"D (29.84cm x 15.24cm) 8.3 lbs (3.77 kg)



Speaker Assemblies:

- Square Grille V-936480 N/A
- 8" Speaker w/o Grille w/Amplifier** VSA-1020C - ①
- 8" 45 ohm Speaker** 4 Volume Levels V-936418 ①
- 8" 25/70 Volt Speaker** V-936400 ①

Round Speaker Mounting Hardware: (Metal) N/A

Bridges	Backboxes	Combo
For 4" V-9904M-5 (5 Pack)	V-9915M-5 (5 Pack)	Must Use V-9904M-5 Bridge & V-9915M-5 Backbox Together
For 8" V-9914M-5 (5 Pack)	V-9915M-5 (5 Pack)	V-9916M

Pre-Construction Bridge for 8" Spkr V-9912M-10 (10 Pack)
Great For Gypsum (Sheetrock) Ceilings w/ 16" or 24" Support Structure

Post-Construction Mounting Ring for 8" Spkr V-9912P-12 (12 Pack)
Great For Gypsum (Sheetrock) Ceilings Plastic

NEW

Step 2

Select Speakers

Wall Speakers

NEW

NEW



All One-Way & Dual-Input VPU's... ① All Talkback VPU's... ②

NEW

Gray Metal: Black Cloth Grille (Paintable Housing)

Wall One-Way.....	V-1052C	Talkback	V-1071
10.13"H x 12.31"W x 4.63"D (25.73cm x 31.27cm x 11.75cm) 4.25 lbs (1.93 kg)			
Corner One-Way	V-1054	Talkback	V-1055
9.75"H x 12.0"W x 4.5"D (24.77cm x 30.48cm x 11.43cm) 3.5 lbs (1.58 kg)			



Black or White

Wall One-Way.....	V-1016-BK (Black)	Talkback	V-1061-BK (Black)
One-Way	V-1016-W (White)	Talkback	V-1061-W (White)
9.7"H x 11.5"W x 4.0"D			
(24.63cm x 29.21cm x 10.16cm) 4.6 lbs (2.09 kg) (26.2cm x 26.2cm x 10.7cm) 4.5 lbs (2.04 kg)			
Bi-Directional Corridor			
One-Way	V-1026C-W (White)	Talkback	V-1066A-W (White)
10.3"H x 10.3"W x 4.2"D (26.2cm x 26.2cm x 10.7cm) 6.6 lbs (2.86 kg)			



Woodgrain: Light Brown Open-Weave Grille

Wall One-Way.....	V-1022C	Talkback	V-1062A
9.6"H x 11.5"W x 4.2"D			
(24.38cm x 29.21cm x 10.66cm) 5.4 lbs (2.45 kg) (26.92cm x 24.63cm x 13.2cm) 5.4 lbs (2.45 kg)			
Dual-Input (One-Way).....	V-1222	Talkback w/LED.....	V-1062B
10.6"H x 9.7"W x 5.2"D (26.92cm x 24.63cm x 13.2cm) 5.4 lbs (2.45 kg)			
Corner One-Way	V-1024C	Talkback	V-1064A
Dual-Input (One-Way).....	V-1224		
10.5"H x 9.5"W x 6.3"D (26.67cm x 24.13cm x 16.0cm) 4.2 lbs (1.86 kg)			
Bi-Directional Corridor One-Way.....	V-1026C	Talkback	V-1066A
Dual-Input (One-Way).....	V-1226		
10.3"H x 10.3"W x 4.2"D (26.2cm x 26.2cm x 10.7cm) 6.4 lbs (2.86 kg)			



Woodgrain: Dark Brown Cloth Grille

Wall One-Way.....	V-1023C	Talkback	V-1063A
9.6"H x 11.5"W x 4.2"D			
(24.38cm x 29.21cm x 10.66cm) 4.6 lbs (2.09 kg) (26.92cm x 24.63cm x 13.2cm) 4.4 lbs (2.00 kg)			
Corner One-Way	V-1025C	Talkback	V-1065A
10.5"H x 9.5"W x 6.3"D (26.67cm x 24.13cm x 16.0cm) 4.3 lbs (1.95 kg)			
Bi-Directional Corridor One-Way.....	V-1027C	Talkback	V-1067A
10.3"H x 10.3"W x 4.2"D (26.2cm x 26.2cm x 10.7cm) 6.4 lbs (2.86 kg)			



All CE (Except: V-1026C, V-1066A, V-1226)

Slimline™ Wall Speaker CE

Modern & Affordable!

- Excellent Voice & Music Quality
- Easy Install - Simply Hang On a Single Screw or Use the 2 Screw Bosses
- Built-In Amplifier (One-Way Speakers Only)
- Built-In Volume Control (One-Way Speakers Only) Conveniently Behind Contemporary Grille

One-Way 2.8 lbs (1.27 kg) **V-1042** - ①

Talkback 2.7 lbs (1.22 kg) **V-1046** ②

7.0"H x 10.3"W x 3.8"D (17.8cm x 26.2cm x 9.5cm)

To Order, Add Color Suffix (Ex: V-1042-BK)

Track & Pendant Speakers

Step 2



Black-BK



Gray-GY



White-W



Custom Color-CC

Custom Colors



Black-BK



Gray-GY



White-W



Custom Color-CC

Custom Colors

▶ Track-Style Speakers ^{CE}

- High-Efficiency Speaker
- Built-In Amplifier & Volume Control (One-Way Speakers Only)
- Attach Track Bracket to a Wall or Exposed Beam

One-Way (1-Watt) 2.5 lbs (1.3 kg) **V-1013B** - ①

One-Way (1-Watt) 2.5 lbs (1.3 kg) **V-1013B-WW** - ①

One-Way (5-Watt) 3.1 lbs (1.41 kg) **V-1014B** - ⑥

5.8" Dia x 8.8" H (14.73cm x 22.35cm)

To Order, Add Color Suffix (Ex: V-1013B-BK)

NEW



White-WW

▶ Pendant Speakers ^{CE}

- High-Efficiency Speaker
- Built-In Amplifier & Volume Control (One-Way Speakers Only)
- Simply Hang from 6' Chain Included

One-Way (5-Watt) 3.2 lbs (1.44 kg) **V-1015B** - ⑥

One-Way (5-Watt) 3.2 lbs (1.44 kg) **V-1015B-WW** - ⑥

Talkback 2.5 lbs (1.13 kg) **V-1019B** ①

5.8" Dia x 8.8" H (14.73cm x 22.35cm)

To Order, Add Color Suffix (Ex: V-1015B-BK)

6' Extension Chain (Black) **V-1093-BK** **NA**

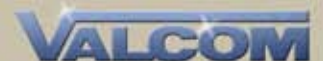
72.0" L (182.88cm) 0.9 lbs (.41 kg)

NEW



White-WW

Ideal for Retail, Restaurants, Offices, Hallways & Covered Patios

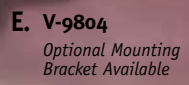


Step 2

Select Speakers

HIGH-FIDELITY

Signature Series™ Speakers



High-Fidelity Sound *Signature Series™* The Very Best In Music Quality!

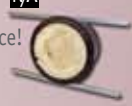
- High-Fidelity Audio Quality
- Built-In Amplifier & Volume Control (One-Way Speakers Only)

NEW *Signature Series™* ► Lay-In Ceiling Speaker

- A. 2' x 2' One-Way w/Built-In Backbox UL/CE..... **V-1422** - 4
- 24.0"L x 24.0"W x 3.75"D (60.96cm x 60.96cm x 9.53cm) 5.5 lbs (2.49 kg)
- European Version: 600mm x 600mm 2.49 kg CE..... **V-1422-EC** - 4

Signature Series™ ► Ceiling Speaker*

- B. 8-Inch One-Way CE..... **V-1420** - 4
- * Pop-On/Pop-Off Volume Knob (Screwdriver Adjustable without the Knob)
- 13.0"Dia x 3.0"D Plus Knob Depth (33cm x 7.6cm) 3.5 lbs (1.6 kg)
- Bridge/Backbox (Metal)**..... **V-9816M** NA
- Specifically Designed Larger for V-1420's Superior Audio Performance!



Signature Series™ ► In-Wall Speaker CE

- C. One-Way..... **V-1450** - 4
- Simply Recess in a Wall (Paint it for a "Hidden" Speaker)
- 12.0"H x 8.65"W x 3.2"D (30.5cm x 21.97cm x 8.12cm) 0.5 lbs (2.5 kg)



Signature Series™ ► Monitor Speaker CE

- Crisp Music Reproduction!** *To Order, Add Color Suffix (Ex: V-1440-BK)*
- Easy Install - Shelf Mount or Wall Mount w/Optional Bracket (V-9804)
- D. One-Way..... **V-1440** - 4
- 7.0"H x 10.3"W x 4.9"D (17.8cm x 26.2cm x 12.4cm) 5.2 lbs (2.34 kg)
- E. **Optional Mounting Bracket**..... **V-9804** NA
- 2"H x 2.75"W x 5.5"D (5.08cm x 6.98cm x 13.97cm) 0.6 lbs (.27 kg)

Valcom Speakers Are Unique!

- One-Way Speakers Have a Convenient Built-In Amplifier w/Volume Control
- Designed for Excellent Voice Paging & Background Music Every Time
- Easily Utilizes Standard CAT 5/6 Cable

Specialty Speakers

Step 2



A. Flush Mount Doorplate Speaker



B. Flush Mount Vandal-Proof Doorplate Speaker



C. Surface Mount Doorplate Speaker



White-W



Black-BK

▶ Doorplate Speakers Weather-Resistant Talkback Speakers

- A. Flush Mount CE (Brass)..... **V-1072A-BRASS** ①
 (Stainless Steel)..... **V-1072A-ST** ①

- Includes Call Button ("CALL" in Braille)
 - Mounts in Standard Double Gang Electric Box
- 4.5"H x 4.5"W x 1.3"D (11.43cm x 11.43cm x 3.3cm) 0.55 lbs (0.25 kg)
LED Versions: V-1072B-BRASS (Brass), **V-1072B-ST** (Stainless Steel)

- B. Flush Mount Vandal-Proof CE..... **V-1073** ①

- One-Way Screws • Call Button
 - Mounts in Standard Double Gang Electric Box
 - 11 Gauge Steel, White Paintable Faceplate
- 4.5"H x 4.5"W x 1.75"D (11.43cm x 11.43cm x 4.45cm) 1.68 lbs (.75 kg)

- C. Surface Mount CE..... **V-1074** ①

- Includes Call Button ("CALL" in Braille)
 - Gray Plastic Housing
- 5.5"H x 4.0"W x 1.1"D (13.97cm x 10.16cm x 2.79cm) 0.6 lbs (0.27 kg)

▶ Surface Mount Ceiling CE Vandal-Resistant Speaker

Ideal for Concrete Ceilings & Harsh Areas: Correctional Institutions, Outside Entrances, Industrial Areas

- Smooth, Tapered Exterior
- Water-Resistant Speaker w/Built-In Amplifier & Volume Control (One-Way Speakers Only)
- Steel Security Screen/Housing w/Tamper-Resistant Screws
- Easy Surface Mounting or Mount to Standard 4" Box

8.56"Dia x 5.13"H (21.74cm x 13.0cm) 4.8 lbs (2.16 kg)

- D. One-Way..... **V-9010-W** - ①



D.

▶ Paging In Two Directions CE

Ideal for Long, Narrow Aisles

- Indoor/Outdoor, Weather-Resistant
- 5-Watts Total
- Built-In Amplifier & Volume Control (One-Way Speakers Only)
- Stainless Steel Hardware (Includes Mounting Bracket)

9.6"H x 8.2"W x 9.3"D (24.38cm x 20.82cm x 23.62cm)
 8.6 lbs (3.90 kg)

- E. Bi-Directional One-Way (Beige)..... **V-1050C** - ⑥



E.

▶ Desktop or Wall Speakers CE

Reach People While They're On The Phone!

- Self-Standing or Can Be Mounted on a Wall as a Mini-Speaker
 - Built-In Amplifier & Volume Control — One-Way Speakers Only
 Volume Control Conveniently Located On The Front
- 8.5"Dia x 5.0"H (21.59cm x 12.95cm) 0.7 lbs (0.32 kg)

- F. One-Way..... **V-763** - ①

- Talkback..... **V-762** ①

- Talkback Push Button..... **V-764** ①

To Order, Add Color Suffix (Ex: V-763-BK)



G.

▶ Spot SoundMasking Speaker™ w/Noise Generator CE

Reduces Possibility of Conversations Being Overheard by Hallway Traffic. Ideal for Clergy, Human Resources, Counselors, Financial Offices & Attorneys

- Constant 'White Noise' (Hissing Sound)
- Built-In Electronics (Power Supply Included)
- Easy Installation - Replaces A Hallway Ceiling Tile
- Self-Contained With Built-In Masking Source

24.0"L x 24.0"W x 3.75"D (60.96cm x 60.96cm x 9.53cm) 5.5 lbs (1.82 kg)

- G. 2' x 2' Lay-In Ceiling..... **V-9422** ①

- European Version: 600mm x 600mm 2.49 kg..... **V-9422-EC** ①

▶ Explosive Atmospheres

- Solid Metal Housing
 - Built-In Amplifier & Volume Control (One-Way Speakers Only)
 - UL Listed For Use In: Class I, Groups C&D Gas Atmospheres
- 6.0"H x 14.0"W x 17.5"D (15.2cm x 35.56cm x 44.45cm) 19.0 lbs (8.55 kg)

- H. 7-Watt, One-Way (Gray)..... **V-1039A** - ②①

- Talkback (Gray)..... **V-1069A** ①



H.



Step 2

Select Horn Speakers

Horn Speakers offer high-efficiency, rugged construction and superb voice quality. They're typically used outdoors or in loud, industrial or harsh interior areas.

It's easy to use hundreds of one-way horn speakers in a zone. Large numbers of horns simply require additional power per area – see Step 3 Pg 16.

Easy Selection Considerations:

- One-Way or Talkback
- Indoor, Outdoor or Industrial Environments
- Area to be Paged in Square Feet
- Determine Ceiling Heights & Type
- Noise Levels

Horn Placement:

Shows SPACE Between Horns & Square Foot Coverage PER Horn

	Quiet 50-65dB	Moderate 65-80dB	Noisy 80-90dB	Very Noisy 90+dB
5-Watt	110' (12,000sq.ft.)	80' (6,400sq.ft.)	50' (2,500sq.ft.)	30' (900sq.ft.)
15-Watt	-	-	75' (5,600sq.ft.)	45' (2,000sq.ft.)
30-Watt	-	-	-	60' (3,600sq.ft.)

Power Pair Run: Power Run Wire Length in Feet

15-30Watt Horns	5-Watt Horns	Flex Horns	24 AWG	22 AWG	20 AWG	18 AWG	16 AWG
-	-	-	1000'	1600'	2500'	4000'	6400'
-	1	1	500'	800'	1280'	2025'	3220'
-	2	2	250'	400'	640'	1010'	1610'
1	4	4	125'	200'	320'	500'	805'

TIP EZ

Valcom's Omni-Lock™ Mounting System

- Mount Base Before Construction is Done
- Movable — 360° Rotation (Other Horns Only Move Up & Down)
- Shatter-Resistant Base — Fits Standard Electrical Gang Boxes

Easiest Mounting Method In The Industry!



Horn Speakers

Industry Recognized for Exceptional Performance

C. V-1038



A. V-1030C V-1030C-GY

► For Industrial, Manufacturing, Warehouse Areas *Features Omni-Lock Mounting System*

- Indoor/Outdoor, Weather-Resistant CE

A. One-Way (5-Watt) **V-1030C** (Beige) - 5
4.6 lbs (2.09 kg) **V-1030C-GY** (Gray)

One-Way (15-Watt) **V-1036C** (Beige) - 15
4.7 lbs (2.13 kg) **V-1036C-GY** (Gray)

B. Talkback **V-1048C** (Beige) 0
w/LED **V-1048B** (Beige)
4.4 lbs (2.00 kg) **V-1048C-GY** (Gray)
Common Size: 7.38"H x 10.0"W x 10.4"D (18.75cm x 25.4cm x 26.4cm)



B. V-1048C-GY

► When You Really Need Power

- High Noise Environments

C. One-Way (30-Watt) **V-1038** (Beige) **Use VP-2048C**
7.38"H x 10.0"W x 10.4"D (18.75cm x 25.4cm x 26.4cm) 5.8 lbs (2.63 kg)

Power Two 30-Watt 48VDC Horns, with Valcom's VP-2048C Power Supply Pg 17

Valcom Horns Stand The Test Of Time!

- One-Way Horns Have a Convenient Built-In Amplifier w/ Volume Control
- Stainless Steel Hardware
- Easily Utilizes Standard CAT 5/6 Cable

Horn Speakers

Step 2

D. V-1030M

Weather-Resistant



F. V-1080-GY

Harsh Weather

Water-Proof



► Marine Horn CE

- Indoor/Outdoor, Weather-Resistant
 - Resists Deteriorating Effects of Salt, Sun, High Humidity
- Equipped w/O-Ring Seals
- Available in White-W

7.38"H x 10.0"W x 10.4"D (18.75cm x 25.4cm x 26.4cm)

D. One-Way (5-Watt)

4.7 lbs (2.13 kg) **V-1030M** - ⑤

One-Way (15-Watt)

4.8 lbs (2.18 kg) **V-1036M** - ⑮

E. Talkback

4.5 lbs (2.04 kg) **V-1048M** ①



E. V-1048M

► **Look for Our New Horn Cage Coming Soon!**

► FlexHorn — The Rugged Speaker™ CE

A Compact Design Perfect For:

- Low Ceilings Such as Light Manufacturing or Multi-Floor Warehouses
- Low to Moderate Noise Environments
- Perfect Solution for Gymsnasiums, Prisons, Subways, Train Stations, Schools, Drive-Thrus, & Parking Garages
- Water-Proof for Environments Requiring Direct Spray Down Such as Car Washes, Food Processing Plants, & Operating Rooms
- Includes Adjustable Mounting Bracket (V-9804) for Mounting on Wall, Ceiling, or Beam.
- Available in Beige-BG, Gray-GY, or White-W To Order, Add Color Suffix (Ex: V-1080-BG) 6.8"H x 8.3"W x 3.3"D (17.3cm x 21.1cm x 8.4cm) 2.8 lbs (1.27 kg)

F. One-Way **V-1080** - ③
 Talkback **V-1090** ①

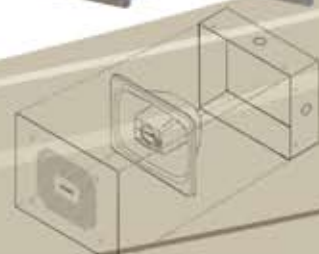
Optional FlexHorn Accessories:

G. Vandal-Resistant Enclosure w/Faceplate (Stainless Steel) **V-9805** **N/A**
 6.8"H x 8.3"W x 3.3"D (17.3cm x 21.1cm x 8.4cm) 6.5 lbs (2.93 kg)
 H. Vandal-Resistant Faceplate (Stainless Steel) **V-9806** **N/A**
 8.5"H x 11"W (21.59cm x 27.94cm) 2.0 lbs (0.9 kg)

4 Ways to Mount

Recessed FlexHorn (Mounted in Wall)	Adjustable Bracket (Included)	Vandal-Resistant Enclosure & Faceplate G. (V-9805)	Vandal-Resistant Faceplate H. (V-9806)

Easy Mounting for a Vandal-Resistant FlexHorn!



Step 3

Select A Power Supply

Built-in power is often included in the Page Control, so an additional Power Supply may not be needed. The amount of power required for a paging system is based on the quantity and type of Page Control and Speakers/Horns selected.

Easy Selection Considerations:

• Products Provide or Consume Power & Are Assigned a Valcom Power Unit (VPU)

Power Provided + #

or

Power Consumed - #

- Products That Neither Consume NOR Provide Power Are a 0
- Note: One Valcom Power Unit = 50mA., -24 Vdc
- VPU Listings are on the Product Pages & Index Pg 30-34

Simply Total All: Example:

- a. Page Control VPU's Page Control 1 x +30 = + 30 VPU Provided
 b. Speaker/Horn VPU's Speakers 15 x -1 = - 15 VPU Consumed
 c. Subtract b. from a. = +15 VPU's LEFT OVER
 NO Power Supply Needed!

- Have VPU's Left Over - You Can Add More Speakers!
- Need More - Simply Select a Power Supply With Enough VPU's to Make Up the Difference!

Power Supplies



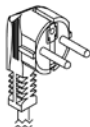
-24 Vdc Switching Digital

- High-Efficiency (90%)
- Less Heat Dissipation
- Much Lighter (40%)
- Available for 100-230 Volt 50-60 Hz
- Less Power Consumption
- Much Smaller (20%)
- "Brownout" Protection
- Larger Units Provide Multiple 2 Amp Outputs to Allow Class 2 or LEO Wiring

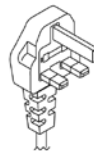
► -24 Vdc Switching Digital Filtered • UL, CSA, CE

Output	1 Amp	2 Amp	4 Amp ** (24 / 48 Vdc)	6 Amp	12 Amp
Power Units	+ 20	+ 40	+ 80	+ 120	+ 240
Mounting	Wall	Wall	Wall <small>Outputs May Be Used In Series for 48V @ 2A</small>	Wall	Wall
Size	4.20"H x 2.60"W x 1.20"D (10.67cm x 6.60cm x 3.05cm)	6.00"H x 3.50"W x 2.25"D (15.24cm x 8.89cm x 5.71cm)	8.45"H x 4.70"W x 2.35"D (21.46cm x 11.93cm x 5.97cm)	10.30"H x 5.92"W x 2.50"D (26.16cm x 15.04cm x 6.35cm)	12.10"H x 8.70"W x 3.90"D (30.73cm x 22.10cm x 9.91cm)
Shipping Weight	2.0 lbs (3.22 kg)	2.4 lbs (1.09 kg)	4.7 lbs (2.13 kg)	7.1 lbs (3.22 kg)	7.1 lbs (3.22 kg)
Part #	VP-1124 VP-1124-EC VP-1124-UK	VP-2124A VP-2124A-EC VP-2124A-UK	VP-4124 VP-4124-E	VP-6124 VP-6124-E	VP-12124


230Vdc Power Supplies [-EC European Power Supply (Plug Included)
 -E Power Supply (without Plug)

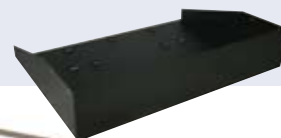


-UK United Kingdom Power Supply (Plug Included)



NEW Accessories

► Shelf Mount for Power Supplies
 Holds one each of VP-4124 or VP-6124 Power Supplies.....VP-9202 



Door Entry Intercoms



▶ Single Door

A. Answering Control ♦ V-2900

- Provides Two-Way Communication Only, No Door Unlock Capability
- Built-In Talkback Amplifier & Ring Generator
- Transmit & Receive Volume Controls • CE/CSA

Power Included

Includes a VP-324 Power Supply Pg 17

Specifications: Input Impedance: 600 ohm; Output: 45 ohm
8.25"H x 4.5"W x 2.35"D (20.95cm x 11.43cm x 5.96cm) 3.4 lbs (1.54 kg)

▶ DoorPhone™ Speaker Controller... V-5324001 ①

D. Communicate Between Telephone & DoorPhone Speaker

- Controls Remote Door Unlocking*
- Door Ajar/Detect Notification Capability*
- Voice Coil DoorPhone Speaker Included
- Dial Up to 20 Digit Telephone # • UL/CSA
- Use w/C.O. Lines or Station Ports, Independently or as Line Sharing Device *w/ Customer's Equip.

9.50"W x 10.50"D (24.13cm x 26.67cm) 5.50 lbs (2.48 kg)



D. Controller & DoorPhone Speaker

▶ Station DoorPhone™ V-5324004 ①

E. Communicate with Telephones that Provide Primeline, Off-Hook Ringdown, Hotline & Elevator Call Capabilities

- LED Confirms the DoorPhone is Activated
- Rings Extensions of Telephone System
- Requires No External Power to Operate
- Weather-Resistant, Tamper-Proof • UL/CSA

4.75"H x 4.75"W x 2.50"D (12.07cm x 12.07cm x 6.35cm) 1.52 lbs (0.68 kg)



E.

▶ Doorplate Speakers Weather-Resistant Talkback Speakers

F. Flush Mount CE (Brass)..... V-1072A-BRASS ①

G. (Stainless Steel)..... V-1072A-ST ①

- Includes Call Button ("CALL" in Braille)
- Mounts in Standard Double Gang Electric Box

4.5"H x 4.5"W x 1.3"D (11.43cm x 11.43 cm x 3.3cm) 0.55 lbs (0.25 kg)

LED Versions: V-1072B-BRASS (Brass), V-1072B-ST (Stainless Steel)

H. Flush Mount Vandal-Proof CE V-1073 ①

- One-Way Screws • Call Button
- Mounts in Standard Double Gang Electric Box
- 11 Gauge Steel, White Paintable Faceplate

4.5"H x 4.5"W x 1.75"D (11.43cm x 11.43cm x 4.45cm) 1.68 lbs (.75 kg)

I. Surface Mount CE V-1074 ①

- Includes Call Button ("CALL" in Braille)
- Gray Plastic Housing

5.5"H x 4.0"W x 1.1"D (13.97cm x 10.16 cm x 2.79cm) 0.6 lbs (0.27 kg)

Residential



F.

G.

Correctional Facilities



H.

Business



I.

Telephone Access Method:

- ♦ PBX Loop Start Trunk Port
Electronic Key Line Position
Dedicated Single Line Phone Set
- PBX Ground Start Trunk Port
- ▲ Page Port (Telephone System Dependent)
- Centrex or C.O. Line
PBX Analog Station Port (Loop Disconnect Required)

Push a button to initiate two-way communication from the door speaker to the telephone.

Once the visitor is identified, dial a programmable code on the telephone to unlock the door.

Intercom Systems

Talkback Telephone System Integration

DualPath

1 Intercom Path • 1 Program Path

Perfect Solution for Schools, Industrial, Auto Dealerships, Hospitals, Airports, etc.

- Communication Path
- Program Path
- Riot Mode
- All Call/Group Call/ Emergency Override All Call
- Caller ID
- Door Unlock Control
- Background Music Input
- Tone Inputs
- SMDR Printer Port
- "Meet Me/Follow Me"
- Class of Service/Zone
- UL, CSA, CE

Wall Mount ♦ **V-2924A** ①
 17.5"H x 10.31"W x 3.06"D
 (44.45cm x 26.19cm x 7.77cm) 17.5 lbs (7.95 kg)



MultiPath

Perfect Solution for Environments That Have a LOT of Communications Going On at the Same Time!

- Easily Configured to Suit the Most Advanced Requirements
- User-Friendly Admin Software Easily Manages Voice Communication Daily, Weekly, Monthly, or Annually Over LAN/WAN
- UL, CSA, CE

Wall Mount ♦ **V-Tw24** ①
 Rack Mount ♦ **V-TR24** ①
 See Website for Dimensions & Weights

24 Zones

Expand in 24 Zone Increments

Wall Mount ♦ **V-2925A** ①
 (Add 1 V-2925A to Your V-2924A for 48 Zones)
 17.5"H x 8.37"W x 3.06"D (44.45cm x 21.26cm x 7.77cm)
 13.5 lbs (6.13 kg)

48 Zones

Wall Mount ♦ **V-Tw48** ①
 Rack Mount ♦ **V-TR48** ①

Wall Mount ♦ **V-2925A** ①
 (Add 2 V-2925A's to Your V-2924A for 72 Zones)

72 Zones

Rack Mount ♦ **V-TR72** ①

Wall Mount ♦ **V-2925A** ①
 (Add 3 V-2925A's to Your V-2924A for 96 Zones)

96 Zones

Rack Mount ♦ **V-TR96** ①

V-2924A Accessories

- Option Card **V-2926** ①
 (Enhanced Caller ID, Programmable Dial Codes, User Defined Page Groups)
- Option Card w/Time Event Scheduler..... **V-2928** ①
 (For Computer Requirements See www.valcom.com)
 Power Requirements: 120 Vac or 230Vac/ 1A Versions (Add "-E" to part #'s)
 5.3"H x 3.0"W x 1.1"D (13.46cm x 7.62cm x 2.79cm) 1.3 lbs (.59 kg)
- Clock Relay Card **V-CIO** ①
- Clock Control Card for V-2924A..... **V-2927** ①
- Clock Correction Kit **V-CLK2924**



Expand Up To 360 Zones

Call to See How Easy It Is to Do LARGER Systems!
 See Page 20 for 24 Zone Expansion Card V-TCM.

MultiPath Talkback/Intercom Systems & Accessories! - Page 20

PBX Loop Start Trunk, Electronic Key Line, Single Line Phone

- 1 Zone Talkback ♦ **V-9941A** - ⑥
 Specifications: Input Impedance: 600 ohm; Music Input Level: 1 to 3W Power Requirements: -24Vdc, 300mA
 8.25"H x 4.65"W x 2.3"D (20.95cm x 11.81cm x 5.84cm) 1.9 lbs (.86 kg.)
- 9 Zones Talkback ♦ **V-1109RTHF** - ⑥
 Specifications: Input Impedance: 600 ohm; Music Input Level: -10dBm Power Requirements: -24Vdc, 310mA
 7.1" H x 5.9" W x 2.1" D (18.03cm x 14.98cm x 5.33cm) 3.3 lbs. (1.50 kg.)

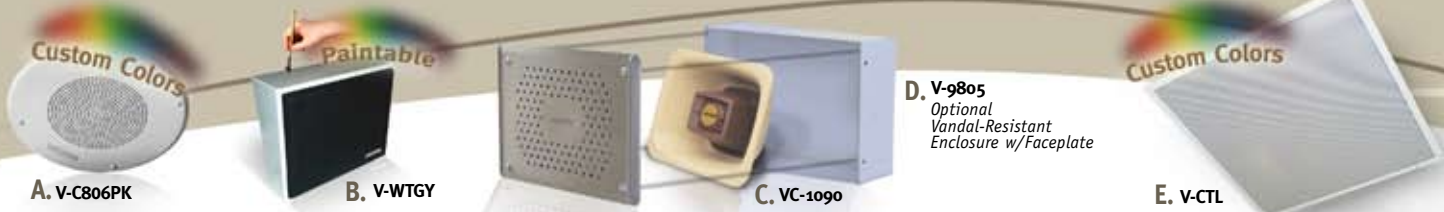
Analog Page Controls Talkback 2000 Series

- 3 Zone Talkback ♦♦♦ **V-2003AHF** + ⑩
 Specifications: DC Output: -24Vdc @ 500mA 6.5 lbs (2.95 kg)
 - 6 Zone Talkback ♦♦♦ **V-2006AHF** + ②①
 Specifications: DC Output: -24Vdc @ 1.5A 8.2 lbs (3.72 kg)
- For more information see page 6



NEW

MultiPath Accessories



MultiPath Talkback Speakers *Volume Preset Taps*

- A. 8" Ceiling Speaker** w/Taps (6/Pack)..... **V-C806PK**
 - Exceptional for Voice & Music • White Epoxy Finish
- B. 8" Wall Speaker** w/Taps..... **V-WTGY**
 - Gray/Black Grille, Paintable
 - Excellent Voice & Music Quality • Easy Installation
- C. FlexHorn™**..... **VC-1090**
 - Water-Proof Available in Beige-BG, Gray-GY, or White-W
- D. Optional FlexHorn Accessory Vandal-Resistant Enclosure w/Faceplate** (Stainless Steel) **V-9805**
- E. 2' x 2' Lay-In Ceiling Speaker** w/Backbox..... **V-CTL**
Replaces 2' x 2' Tile - No Cutting Tiles, No Broken Tiles, No Mess
 - Save Time, Effort & Money - Get On & Off the Job Quickly
 - Excellent Music & Voice Quality
 - Durable White Acrylic Baked Enamel Finish
 - Integral Backbox Meets or Exceeds ASTM E84 Flame & Smoke Test w/3 Hour Burn Rating (UL 181)

Expansion Cards

- CPU Card W/2 V-SLC Cards** (4 links)..... **V-CPU4**
 - Storage Medium for Customer Data Base Information
 - Internal Common Control for the System Peripheral Cards
 - An Access Point for External Communication Functions
 - Supports Up to 15 Feature Cards & 360 Station Ports
- Serial Card**..... **V-SER**
 - Mounts to the CPU • Provides SMDR Data
- 24 Point One-Way Paging Expansion Card**..... **V-STX**
 - 24 Line Level Speaker Outputs • Relay Output Per Zone
 - Allows Voice & Tone Annunciation
- 24 Point Talkback Intercom Expansion Card**..... **V-TCM**
 - 45 Ohm Handsfree Card Included
 - 1-Watt Amplifier Built Into Each Station Output
 - Allows Voice & Tone Annunciation
 - 24 Switch Inputs to Facilitate Call-In Switches

Accessories

- Modem Kit** External Modem 33.6k..... **VCMDM**
User Can Program and Change System Database Information From an Off-Premise Location & Remotely Monitor SMDR Activity
 - Telephone Cable (Silver Satin w/RJ11)
 - Interface Cable • Serial Interface Adapter
- Program Distribution Panel**..... **V-PDP**
 - Connection of Audio Source, Mic, & 5 Pushbutton Functions
 - Buffers Audio Signals from Radios, Cassette, CD Players
 - Separate Treble, Bass & Volume Controls for 3 Audio Inputs
 - Screw Terminal Connections to Programmable Relays of CPU
 - 25 Pair Cable Provided for Connection to CPU
 - Speaker Included to Monitor Audio Sources
 - Front Panel XLR Connector for Mic Input
- SLIC Card - 2 Telephone Interface Circuits**..... **V-SLC**
 - Connects Directly to the CPU
 - Provides 2 DTMF Detector Circuits & Ring Generator
 - Pop Suppression & Battery Feed
- Music - AM/FM CD Control Panel** w/VP-624B..... **V-RDP**
 - 3U Rack Mounting • Station Preset Tuning
 - Quality Monitor Speaker • LED VU Meter
- Universal Relay Interface**..... **V-URI**
 - 72 User Defined Switch Input/ Drivers, ADA, Call-In etc.
 - 8 Door Unlock Relays

Mounting

- 9 Position Card Cage** *Rack Mount*..... **V-MCRK**
 - Fits into Standard 19" Rack
 - Provides Card Slots for Up to 9 Feature Cards (V-CPU4)
 - Power Harness Included
- 4 Position Wall Mount Rack**..... **V-MWRK**
 - Provides Card Slots for Up to 4 Feature Cards (V-CPU4)
 - Power Harness Included

Backplane Cables

Provides Audio & Data to Cards

- 4 Position** Feature Cards..... **VC40R-4**
Includes Backplane Terminator:
- 8 Position** Feature Cards..... **VC40R-8T**
- 9 Position** Feature Cards..... **VC40R-9T**
- 16 Position** Feature Cards..... **VC40R-16T**

Connections

- Clock Control Interface Pkg**..... **V-CLK**
 - Isolated High Voltage Contact Closures
 - 2 Separate Types of Analog Clocks • Digital Clocks
- Large LED Display Package**..... **V-DSP**
 - Wall/Ceiling Mount Displays Intercom Info in Office Area
 - VCROM Display Driver Card an a VCLED Large Display
 - Green Displays Normal Calls/Red Emergency Calls

Power Supplies

- 6 Amp Positive 24 Vdc Wall Mount**..... **V-C6124P**
 - Powers up to 3 Feature Cards (V-CPU4)
 - Filtered, Regulated UL/CSA/CE



- One-Way Paging Adapter**..... **V-LPT**
- F. Emergency/Normal Call-In Switch**, *Stainless Steel*..... **V-2970**
- G. Push Button Call-In Switch**, *Stainless Steel* (6/Pack)..... **V-2972PK**

Note: VPU's (Valcom Power Units) Not Applicable to MultiPath Products.

IP VALCOM Solutions™



Valcom offers a selection of appliances that enable the user to transport audio over LAN/WAN with unrivaled ease and reliability. Audio can enter the network at any point and be delivered to any other point, groups of points or on an "All Call" basis — all without the need for a server. Hence, the inherently extremely high reliability.

The VIP Series products are all fully compatible allowing mix and match capabilities to provide solutions limited only by your imagination. The use of Multicast insures efficient use of network bandwidth. For interfacing with the analog world, these appliances are available in three basic configurations, audio ports (line level), FXS (station port) and FXO (loop trunk port).

- Peer-Peer, No Server Required
- Auto Destination Programmable
- DTMF Dial Select - 1024 Zones
- 1 to 11 Digit Dial Plans
- Two Way – Transmit / Receive
- POE 802.3af, Class 3, or Local Power 24 VDC
- Can Use DHCP Servers to Acquire IP Addresses
- Web Based Configuration/Setup
- Contact Closure for AUX Audio Input, Audio Indication, Door Unlocking
- 1 RJ45 Ethernet Connection
- Front Panel Activity LED • Network Activity LEDs
- Radio Link w/Mic Closure/VOX
- Point to Point, Zones, Groups, All Call

Audio Ports (Line Level -10dbm)

- SIP, UDP, Multicast
- Local Aux Analog Input (RCA Jack)
Mutes Aux During Page
- Programmable Contact Closure
Activation or VOX Activation
- Audio & Contact Closure Per Port

Applications

- *Paging Analog or IP Loudspeakers*
- *Wide Area Voice Notification System*
- *Radio Link Remote Audio Monitoring*

▶ 1 Audio Port

- 1 Audio Output & Input
 - 1 Contact Closure Input
 - 2 Programmable Form C Relay Contacts
- NETWORKEDVIP-801**

▶ 2 Audio Ports

- 2 Audio Outputs & Inputs
 - 2 Contact Closure Inputs
 - 2 Programmable Form C Relay Contacts
- DUAL NETWORKEDVIP-802**

▶ 4 Audio Ports

- 4 Audio Outputs & Inputs
 - 4 Contact Closure Inputs
 - 4 Programmable Form C Relay Contacts
- QUAD NETWORKEDVIP-804**

FXS Ports (Station Ports)

- UDP, Multicast
- Caller ID Information – Various Options
- DTMF Dial Select, Zones, Groups

Applications

- *Hot Line* • *Red Phone*
- *Emergency Intercom* • *Intercom*
- *Line Extender* • *Courtesy Telephones*

▶ 1 FXS Port

- 1 RJ-11 FXS Port
 - 2 Programmable Form C Relay Contacts
- ENHANCED NETWORKED FXSVIP-811**

▶ 2 FXS Ports

- 2 RJ-11 FXSs
 - 4 Programmable Form C Relay Contacts
- DUAL ENHANCED NETWORKED FXSVIP-812**

▶ 4 FXS Ports

- 4 RJ-11 FXSs
 - 4 Programmable Form C Relay Contacts
- QUAD ENHANCED NETWORKED FXSVIP-814**

FXO Ports (Loop Start)

- UDP, Multicast
- Caller ID Information – Various Options

Applications

- *Tie Lines*
- *PSTN Access*
- *Legacy Interface*

▶ 1 FXO Port

- 1 RJ-11 FXO
 - 1 RJ-11 Telephone Failover Connection
 - 2 Form C Relay Closures
- ENHANCED NETWORKED FXOVIP-821**

▶ 2 FXO Ports

- 2 RJ-11 FXOs
 - 2 RJ-11 Telephone Failover Connections
- DUAL ENHANCED NETWORKED FXOVIP-822**

▶ 4 FXO Ports

- 4 RJ-11 FXOs
 - 4 RJ-11 Telephone Failover Connections
- QUAD ENHANCED NETWORK FXOVIP-824**

1.38"H x 6.13"W x 5.25"D (3.50cm x 15.6cm x 13.33cm) 1.25 lbs (0.57 kg)

1.75"H x 6.75"W x 9.5"D (4.45cm x 17.15cm x 24.13cm) 1.75 lbs (0.80 kg)

Note: VPU's (Valcom Power Units) Not Applicable to IP Products.

SIP Paging Systems

PagePro IP[™] By Valcom

NEW



SIP Paging Gateway 200 Series Page Controls

- Enables Voice Access to 1 or 4 Zones of One-Way Analog Paging Plus 8 Zones of IP Paging
- Designed for Use with Virtually All SIP Based Telephone Systems
- Live or Recorded Messages
- 65,000 Speakers, Expandable to 256 IP Paging Zones
- Easily Connect Loudspeaker System to Existing Computer Networks
- Supports IP & Analog Amplified Speakers
- Supports Legacy Paging Systems
- Web Interface for Control and Setup
- Night Ring for SIP Systems
- Feedback Eliminator Store and Play

▶ 1 Zone of One-Way Analog Paging Plus 8 Zones of IP PagingVIP-201

- 1 Analog Audio Output
 - 1 Analog Audio Input
 - 2 Programmable Form C Relay Closures
- 1.71"H x 19"W x 5.3"D (48.3cm x 4.3cm x 13.5cm) 6.9 lbs (3.13 kg)

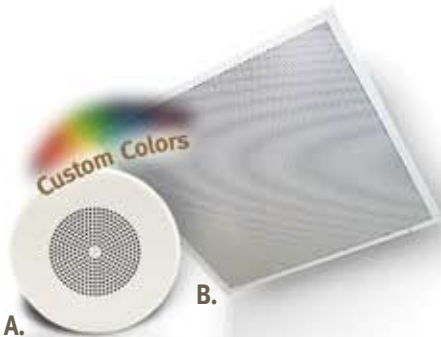
▶ 4 Zones of One-Way Analog Paging Plus 8 Zones of IP PagingVIP-204

- 4 Analog Audio Output
 - 4 Analog Audio Input
 - 4 Programmable Form C Relay Closures
 - 4 Programmable Contact Closure Inputs
- 1.72"H x 19"W x 9.5"D (4.4cm x 4.3cm x 24.1cm) 7.9 lbs (3.58 kg)

SIP Paging Speakers

POE (802.3af)

Audio/Aux Output to Drive Valcom Amplified Speakers



▶ SIP Ceiling Speakers

▶ SIP Wall Speakers

▶ SIP Horns

A. 8" Ceiling Speaker

13.0"Dia x 3.0"D (33.0cm x 7.6cm) 3.8 lbs (1.73 kg)

One-WayVIP-120

B. 2' x 2' Lay-In Ceiling Speaker

w/Integral Backbox
23.75"L x 23.75"W x 3.75"D
(60.32cm x 60.32cm x 9.52cm) 5.5 lbs (2.48 kg)

One-WayVIP-402

European Version:VIP-402-EC
600mm x 600mm 2.49 kg

C. Wall Speaker

Gray w/Black Grille (Paintable Housing)
10.13"H x 12.31"W x 4.63"D (25.73cm x 31.27cm x 11.75cm)
4.25 lbs (1.93 kg)

One-WayVIP-410

D. Surface Mount Wall Speaker/Digital Clock

Gray w/Black Grille (Paintable Housing)
14.9"H x 12.4"W x 4.7"D (37.85cm x 31.50cm x 11.94cm)
5.0 lbs (1.14 kg)

One-WayVIP-411-DS

Flush Mount Wall Speaker/Digital Clock

Gray w/Black Grille (Paintable Housing)
14.9"H x 12.4"W x 4.7"D (37.85cm x 31.50cm x 11.94cm)
5.0 lbs (1.14 kg)

One-WayVIP-412-DF
(Not Pictured)

E. IP FlexHorn[™] w/Long Line Extender Up to 1200 ft.

Available in Beige-BG, Gray-GY, or White-W
6.8"H x 8.3"W x 3.3"D (17.3cm x 21.1cm x 8.4cm) 2.8 lbs (1.27 kg)

One-WayVIP-480L-BG

One-WayVIP-480L-GY

One-WayVIP-480L-W

F. 5-Watt IP Horn w/Long Line Extender Up to 1200 ft. High-Efficiency Horn

Available in Beige-BG, Gray-GY, or Marine White-M
7.38"H x 10.0"W x 10.4"D (18.75cm x 25.4cm x 26.4cm) 5.8 lbs (2.63 kg)

One-WayVIP-130L-BG

One-WayVIP-130L-GY

One-WayVIP-130L-M

G. Optional Vandal-Resistant Enclosure w/Faceplate for IP FlexHorn (Stainless Steel)V-9805

6.8"H x 8.3"W x 3.3"D (17.3cm x 21.1cm x 8.4cm) 2.8 lbs (1.27 kg)

SIP Doorplate Speakers & IP Tie Line



SIP Doorplate Speakers

SIP Intercom/Doorplate Speaker

- Flush Mount Brass Plate
- Call Button & LED
- POE (802.3af)
- Relay Contact for Door Unlock

A. VIP-172L-Brass Brass

B. VIP-172L-ST Brushed Stainless Steel

Wallplate Dim: 4.5"H x 4.5"W x 1.3"D (11.43cm x 11.43 cm x 3.3cm)

SIP Vandal-Proof Intercom/Doorplate Speaker

- Durable Flush Mount 11 Gauge Steel (*Paintable*)
- Call Button & LED
- POE (802.3af)
- Relay Contact for Door Unlock

C. VIP-172L-VR

4.5"H x 4.5"W x 1.75"D (11.43cm x 11.43cm x 4.45cm)

Power Supplies

Local Power Option for VIP-800 Series

Power Supply

0.25 Amp VIP-324

- Receptacle Mounted
- UnFiltered
- UL, CSA

3.0"H x 2.50"W x 2.00"D (7.62cm x 6.35cm x 5.08cm)
.925 lbs (.42 kg)



Accessories

NETWORKED INPUT

& RELAY MODULE VIP-848

Remote Control of Relay Outputs Across a LAN/WAN

- Repeat Contact Closures
- 8 Contact Closure Inputs
(An Input May Control a Single Relay, or a Group of Relays)
- 8 Relay Outputs Supervision
(A Relay May Be Set to "Follow" Another Relay)
- Power-Up Relay State (Active or Inactive)
- 3 Input Priority Levels

1.75"H x 6.75"W x 9.5"D (4.45cm x 17.15cm x 24.13cm) 1.75 lbs (0.80 kg)



IP Tie Line

Tie Multiple Non-IP Telephone Systems Together

NEW



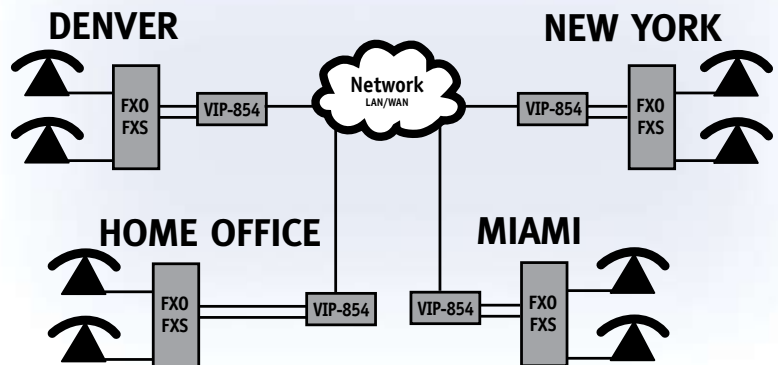
IP Tie Line

- Supports Telephone Systems that Do Not Provide Calling Party Supervision
- Use w/Analog, Hybrid, Digital Key Systems & PBX's
- Requires One Trunk Port (FXO) & One Analog Station Port (FXS) at EACH System
- Dial Select Desired Remote Office
- Auto Destination for Two Systems

2 Channel VIP-854

1.75"H x 6.75"W x 9.5"D (4.45cm x 17.15cm x 24.13cm) 1.75 lbs (0.80 kg)

Connect Multiple Facilities



NEW

In-Wall Modular Mixer

Cost-Effective Solution that Eliminates the Use of Expensive In-Wall Amplifiers

Common Features: V-9983-W & V-9985-W

- Built-In Compressor (Option Switch Controlled) for Automatic Consistent Volume Level Adjustment Even When Voices Vary - Low to High
- Master Volume Control for Optimum Volume Adjustments & Volume Control for Each Input
- 1 General Building Page Input (-10dBm) Overrides All Other Inputs
- Drives 50 Amplified Speakers/Horns
- 8 Segment LED Meter for Visual Indication of Audio Signal Levels
- Full Frequency Range Output for Speakers
- Hi Pass Output for Horns
- Screw Terminals for Easy Connections
- Operates on 24Vdc

Modern & Attractive White Decorative Faceplate Included

2 Channel Mixer — Expandable to 10 Channel



In-Wall Modular Mixer.....V-9983-W - 1
Mounts in 3 Gang Electrical Box • 5.0"W x 4.25"H x 2.0"D (12.7cm x 10.8cm x 5.08cm) 4 lbs (1.5 kg)

Features of In-Wall Modular Mixer V-9983-W	Features of Remote Module V-9984-W (Add up to 4)				
	1	2	3	4	
Mic Inputs	0	1	2	3	4
AUX Inputs	1	2	3	4	5
General Page Input Overrides All Other Sources	1	1	1	1	1

4 Channel Mixer — Expandable to 10 Channel



In-Wall Modular Mixer, w/Remote.....V-9985-W - 1
Mounts in 4 Gang Electrical Box • 6.64"W x 4.25"H x 2.0"D (16.87cm x 10.8cm x 5.08cm) 4.25 lbs (1.93 kg)

Features of In-Wall Modular Mixer w/ Remote V-9985-W	Features of Remote Module V-9984-W (Add up to 3)			
	1	2	3	
Mic Inputs	1	2	3	4
AUX Inputs	2	3	4	5
General Page Input Overrides All Other Sources	1	1	1	1

Remote Add-On Features: V-9984-W

- Provides 1 Balanced XLR Microphone Input & 1 Auxiliary Input for MP3 Players, CD, DVD or PC's
- Connects to Main Control Module, w/2 Pair 24 AWG Cable
- Screw Terminals for Easy Connections
- Volume Control for Each Input
- Power "ON" Indicator
- Phantom Power (Switch Controlled) w/"ON" Indicator Allows Use of Consumer Microphone

*Add Up to 4 Remotes to V-9983-W
Add Up to 3 Remotes to V-9985-W*

Remote Module



In-Wall Remote Module.....V-9984-W - 1
Mounts in 1 Gang Electrical Box
1.64"W x 4.25"H x 2.0"D (4.17cm x 10.8cm x 5.08cm)
.25 lbs (0.1kg)

Expanded 10 Channel Connections:

- 4 Microphones (Wired or Wireless)
- 5 Auxiliary Inputs
 - Tuners
 - CD
 - MP3 Players
 - Headphone Jack
 - Laptop
- 1 General Page Input (Overrides All Other Sources)



A Complete Sound System Ideal For:

- Conference Rooms
- Meeting Rooms
- Restaurants
- Institutional Cafeterias
- Gymnasiums
- Sporting Complexes
- Auditoriums
- Lecture Halls

Visit our website for Application Ideas.

System Enhancements



V-2971

NEW



V-2991-W

Call-In Switches

Provides Remote Call-In Capability

4.5"H x 2.75"W x 1.0"D (11.43cm x 6.98cm x 2.54cm) 0.4 lbs (.18 kg)

- A. Call-In Switch w/Volume Control, Stainless Steel V-2971 ①
- B. Call-In Switch w/Volume Control, White V-2991-W ①



A. 4.5"H x 2.75"W x 2.88"D
(11.28cm x 6.98cm x 7.32cm)
1.1 lbs (.50 kg)

NEW



B. 4.5"H x 2.75"W x 1.70"D
(11.43cm x 6.99cm x 4.32cm)
.80 lbs (.36 kg)

Speaker Volume Controls

Single Gang Box
• Controls Volume of up to 150 One-Way Speakers

- A. Speaker Volume Control, Stainless Steel V-1092 ①
- B. Speaker Volume Control, White V-2992-W ①

Paging Expansion

Single Gang Box
With These Little Boxes You Can Add Speakers On & On & On . . .

- Pre-Amplifies Low Level Audio to Remote Sites
- Virtually Unlimited Expansion (150 One-Way Speakers Per Box)
- Master Volume Control for Entire System/Groups of Remote Speakers
- Isolates Page Port from Speaker Lines

Specifications: Output Impedance: 8 ohm Power Requirements: -24Vdc, 45mA

- A. Page Port PreAmp/Expander, Stainless Steel CE V-1094A - ①
- B. Page Port PreAmp/Expander, White V-2994-W - ①

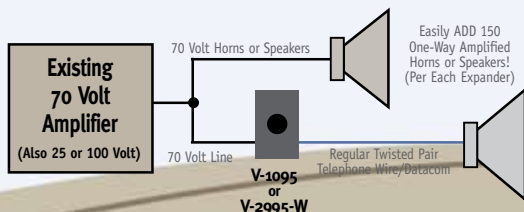
25/70/100 Volt Paging Expansion

Single Gang Box
Expand 25/70/100 Volt Systems w/o Straining the Existing Amplifier

- Connects to Amplifier Output or Anywhere on 25/70/100 Volt Line
- No Costly Amplifiers or Heavy Gauge Cable Required

Specifications: Output Impedance: 8 ohm

- A. 70 Volt Expander, Stainless Steel V-1095 ①
- B. 70 Volt Expander, White V-2995-W ①



Unlimited Expansion Is A Breeze w/Valcom Amplified Speakers

Noise Sensing Volume Control.....V-9933A - ②

When Noise Levels Change, So Do Your Speakers — Automatically. Noise Levels Can Vary in Machine Shops, Manufacturing Plants, Printing Shops, Auto Body Shops. . .

- Constantly Monitors the Area & Automatically Adjusts the Volume of the Paging Speakers
- Use One Per Zone and/or One Per Noise Area • CE

Specifications: Output Impedance: 8 ohm Power Requirements: -24Vdc, 100mA

7.3"H x 4.7"W x 2.1"D (18.54cm x 11.93cm x 5.33cm) 1.1 lbs (0.50 kg)

Remote Microphone (Must be used w/ V-9933A) V-9934 ①

- Self-Contained Microphone & Pre-Amp ce
- No Power Supply Required
- Up to 4 Units May Be Paralleled on One V-9933A

1.50"H x 2.90"W x .81"D (3.81cm x 7.37cm x 2.06cm) 0.06 lbs (0.03 Kg)

Input Matching Transformer.....VMT-1 ①

Connects Telephone Systems to Most Public Address Amplifiers for Telephone Paging

- Functions as Output-matching Transformer to Feed Program Material Over a 600-ohm Telephone Line for "Music-on-Hold"
- Compatible w/Any 25V Output Connection Amplifier
- Hi-Z, 10k-ohm Primary Impedance
- Lo-Z, 600-ohm Secondary Impedance, Balanced w/Center Tap
- Matches High-to-Low Impedance or Low-to-High Impedance
- Adapts Line Level Signals to Microphone Inputs

1.75"H x 3.75"W x 1.25"D (4.45cm x 9.53cm x 3.20cm) 0.5 lbs (.23 kg)

FM Tuner.....V-2952 - ⑤

Sleek Compact Design for Music-On-Hold!

- Built-In Speaker Allows Tuning w/o Broadcasting Over Speaker System
- 2 Outputs for Music-On-Hold, Background Music
- Volume Control For Each Output • Treble & Bass Controls

Specifications: Output Impedance: 8 ohm/.5 Watt, 600 ohm/100mW

Power Requirements: -24Vdc/250mA or VP-412A Pg 17

6.19"H x 8.25"W x 1.55"D (15.72cm x 20.96cm x 3.93cm) 2.2 lbs (1.00 kg)

Music-4-Life™ N/A

Play Background Music or Music-On-Hold Without Paying Monthly Music Fees!

- Purchase Includes A Lifetime Public Performance License
- Hear Music For Life - Visit www.valcom.com/!**

5.5"H x 4.8"W x 2"D (13.97cm x 12.19cm x 5.08cm) 1.4 lbs (.63 kg)

Digital Sound Level Meter Pro II.....V-9992 ①

Measure Your Environments Sound Level

- Compact, Professional Instrumentation (Battery Included)
- High Tech, High Performance • Easy Max/Min Functions

Power Requirements: One 9 Volt Battery 006P or IEC 6F22 or NEDA 1604

9.1"H x 2.1"W x 1.3"D (23.11cm x 5.33cm x 3.30cm) 1 lbs (.45 kg)

System Enhancements



NEW

▶ **Stored Message/Mic Page Panel..... V-9908**

Record Up to 8 Stored Messages— Microphone for Live Announcements - 5

- Stores & Plays Up to 8 Recorded Messages Over Paging System
- Provides 8 Minutes of High Quality Digital Recording
- Eight Front Panel Buttons – Each w/LED
- Message Cancel Button
- Push-to-Talk Microphone for Live Announcements
- Power “ON” & Visual System Fault Indicator
- Easy Programming to Upload/Download Voice Messages
- Optional Interfaces Available

8.25"W x 4.25"H x 2"D (12.7cm x 10.8cm x 5.08cm) 4 lbs (1.5 kg)

▶ **Multi-Messenger USB Device..... V-9989** ①

A Solid-State Digital Message Repeater That Installs Easily Into Any Messaging Application That Requires Triggered, Continuous or Timed Message Play. **NEW**

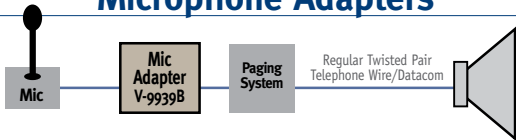
- Messages & MP3 Files are Stored on 16MB - 4GB USB Flash Drives (No Special Software Needed)
- Playback Quality Up to 128Kbps
- Built-In Monitor Speaker
- LED Status Indicator
- Store Up to 99 Messages
- Triggered and/or Timed Playback
- Active Output Indication Trigger
- Auxiliary 12VDC Output for Wiring Sensors
- Power Supply Included CE/CSA

Easy Connections on Back



5.5"H x 6.0"W x 1.7"D (13.97cm x 15.24cm x 4.32cm) 1.5 lbs (.675 kg)

Microphone Adapters



▶ **Microphone Adapter..... V-9939B** - 1

- Provides Contact Closure Specifications: In/Out Impedance: LoZ
- Specifications: In/Out Impedance: 50Kohm Unbalanced; 600ohm Balanced
- Power Requirements: -24Vdc Filtered 40mA CE

8.25"H x 4.507"W x 2.35"D (20.95cm x 11.43cm x 5.97cm) 7 lbs (.32 kg)



Microphones

▶ **Desk Paging Microphone..... V-400**

- Omni-Directional
- Push-To-Talk Switch & Locking Bar

9.4"H x 4.0"W x 6.0"D (24.13cm x 10.16cm x 15.24cm) 1.4 lbs (.63 kg)

▶ **Dynamic Noise Canceling Microphone..... V-420**

- Handheld w/Press-To-Talk Lever
- Heavy Duty Coil Cord Extends to 6'

3.9"H x 2.9"W x 2.6"D (9.9cm x 7.4cm x 6.6cm) .63 lbs (.28 kg)

▶ **Gooseneck Microphone..... V-450**

- Omni-Directional
- Push-To-Talk Switch
- Gooseneck 19" w/Mounting Flange

1.75"Dia x 23.5"L (4.44cm x 59.69cm) 1.6 lbs (.73 kg)

▶ **Multi-Zone Microphone..... V-5335405** **Power Included**

- Built-In Touch-Tone Key Pad Provides Direct Access to Paging System in Emergencies & Selected Zones
- Uni-Directional Microphone (Reduces Ambient Noise)

Gooseneck 14" Base 3.0"H x 7.0"W x 5.0"D (7.62cm x 17.78cm x 12.70cm) 2.5 lbs (1.13 kg)

▶ **USB Message-On-Hold Device..... V-9988** ①

Continuous-Play Audio Source for Message-on-Hold, Background Music, or Any Other Audio Application Where High-Quality Audio Playback is Required.

- Messages & MP3 Files are Stored on 16MB - 4GB USB Flash Drives (No Special Software Needed)
- Playback Quality Up to 128Kbps
- Continuous Playback
- Built-In Monitor Speaker
- LED Status Indicator
- Power Supply Included CE/CSA



5.5"H x 6.0"W x 1.7"D (13.97cm x 15.24cm x 4.32cm) 1.5 lbs (.675 kg)

▶ **Stacking Feedback Eliminator..... V-9964**

Eliminates Busy Signals On Heavily Used Paging Systems & Prevents Acoustic Feedback - 6

- Multiple Messages Recorded Simultaneously
- Stacks Messages - Records a Page While Playing One
- One Unit Eliminates Feedback to ALL Zones
- Automatic Consistent Volume Level Even When Recording Voices Vary - Low to High
- High-Fidelity - Voice Sounds Natural Not Like A Recording
- LED Indicators for Play, Record, Busy, Power
- Dipswitch Features: Pre-Announce Alert Tone, Priority Override (Real Time or Delayed), DTMF Message Cancel
- Real Time Background Music Input w/Volume Control
- Two Audio Outputs: 8 & 600 ohms
- Emergency Messages Can Interrupt Play Back Sequence



Power Requirements: -24Vdc, 250mA
11.96"H x 7.10"W x 1.72"D (29.87cm x 18.03cm x 4.37cm) 2.5 lbs (1.125 kg)

STROBES - RINGERS - DISCREET COMMUNICATIONS

System Enhancements

- For Security/Priority - A Tone May Be Better Than Voice
- Use In Hospitals - When Voice Announcements Are Not Appropriate
- Use In Department Stores - For Discreet Paging

NEW Strobes

▶ ADA Compliant Strobe.....V-5580041 ①

*110 Candela of Brilliancy Strobe,
Covers 70 ft by 70 ft Area*

- Fits Into A Standard 4" X 4" Electrical Box (Included)
- Can Be Activated By Applying Power, Dry Contact Closure Or 70 Volt Speaker Voltage
- Flash Rate Is Designed To Comply With ADA
- Power Supply Included
- Mount Strobe 80 Inches Above Floor

CAUTION: DO NOT Use 2 Strobes Within Same Field of View

4.25"H x 4.25"W x 4.25"D (10.80cm x 10.80cm x 10.80cm) 3.00 lbs (1.35 kg)



▶ Auxiliary Relay Unit.....V-9955 ①

*Relay Unit for Strobe Activation,
Door Control, Camera Control*

- Three 24 VDC 2 Pole Relays w/1 Amp Contacts
- Screw Terminals for All Connections
- Independent Control or Simultaneous Operation of Relays
- Expandable to 6 Relays by Adding V-9957 Expansion Board

7.1"H x 4.7"W x 2.1"D (18.03cm x 11.94cm x 5.33cm) 0.7 lbs (32 kg)



Ringer Horns

▶ Loud Warble Horn.....V-9925A - ⑩

- 90VAC Ring or 18VAC Buzzer Voltage Activation
- Connects Directly to PBX Station
- Built-In Tone Generator, 5-Watt Amplifier, & Volume Control

Power Requirements: -24Vdc, 500mA Activate with 90Vac, 18Vac
6.5"H x 8.2"W x 10.4"D (16.51cm x 20.82cm x 26.4cm) 4.7 lbs (2.13 kg)



▶ Loud Ringer & Warble Horn.....V-9945A

Power Included

- Interrupted or Uninterrupted Contact Closure Activation
- Built-In Tone Generator, 5-Watt Amplifier, & Volume Control
- Warble Tone - Night Ring
- Single Tone - Time Clock/Doorbell Alarm
- Single Tone Overrides Warble Tone if Activated Simultaneously • CE
- Power Supply Included

6.5"H x 8.2"W x 10.4"D (16.51cm x 20.82cm x 26.4cm) 5.4 lbs (2.45 kg)



Adds Tones Over Paging

▶ Multi-Tone Generator.....V-9927A - ②

Up To 8 Different Tones w/A Single Unit

- Siren Evacuation*
- Whoop Tornado*
- Warble Fire*
- Steady Shift Changes*
- Burst Alarm Signal*
- Chime Doorbutton/Code Call
- Dual Chime Doorbell Ring
- TeleBell Auxiliary Ring

* USA Standard Immediate Evacuation Signals

- Contact Closure Activation
- Automatically Overrides Page or Music
- Choice of 2 Sets of 8 Different Tones • CE

Specifications: Input Impedance: 600ohm; Output: 8ohm Power Requirements: -24Vdc, 65mA
8.2"H x 4.55"W x 2.3"D (20.82cm x 11.5cm x 5.84cm) 1.8 lbs (.82 kg)



▶ 6 Line Audible Ring Unit.....V-9936A - ④

- 90Vac Ring or Dry Contact Closure Activation
- Connects Directly up to 6 C.O. or PBX Station Lines
- Ringing Over Paging Speakers
- Contact Closure Output to Activate Loud Bells
- Automatically Overrides Page or Music
- Built-In Warble Tone Generator

Specifications: Output: 8 ohm Power Requirements: -24Vdc, 200mA
8.2"H x 4.55"W x 2.3"D (20.82cm x 11.5cm x 5.84cm) 1.9 lbs (.86 kg)



▶ C.O. Audible Ringer.....V-9924C - ⑥

- 90Vac, 18Vac, or Dry Contact Closure Activation
- Connects to Analog PBX Station Port
- Ringing Over Paging Speakers
- Provides 3 Separate Zone Outputs & Volume Controls for Use w/One-Way or Talkback Page Controls
- Automatically Overrides Page or Music

Power Requirements: -24Vdc, 300mA
8.2"H x 4.55"W x 2.3"D (20.82cm x 11.5cm x 5.84cm) 1.7 lbs (.77 kg)



▶ Code Call Unit.....V-9923B - ⑥

- For Security/Priority - A Tone May Be Better Than Voice
- Use In Hospitals - When Voice Announcements Are Not Wanted
- Use In Department Stores - Does Not Distract Customers
- Contact Closure Output to Activate Loud Bells
- Up to 81 Two-Digit Codes or 729 Three-Digit Codes

Power Requirements: -24Vdc, 300mA • CE
7.1"H x 5.9"W x 2.1"D (18.03cm x 14.99cm x 5.33cm) 1.9 lbs (.77 kg)



Easy Synchronization

GOT THE CORRECT TIME?

Valcom Clocks



WIRELESS

Manage the day's schedule more efficiently!

Mesh Network Wireless Clock Systems are designed to provide:

- Precision Time Keeping — Improve Time Management
- Increase Efficiency Without Cable!
- Wireless Clock Correction—Both Analog & Digital
- Each Valcom Clock Receives Wireless Signal Then Becomes a Transmitter & Repeater
- Each Clock Increases Signal Quality Through Building
- Battery Clocks Transmit/Receive Signal Once Every Four Hours at 12, 4 & 8 O'Clock
- 24 & 110-Volt Models Transmit/Receive Data Every Minute
- No License Required

DIGITAL

▶ Wall, Flush or Double Mount, *Black*

24V	110V
2.5" V-DW2425	2.5" V-DW11025
4.0" V-DW2440	4.0" V-DW11040



ANALOG

▶ Surface Mount, *Black*

24V	110V
12" V-AW2412	12" V-AW11012
16" V-AW2416	16" V-AW11016
<i>Battery Operated</i>	
12" V-AW12	
16" V-AW16	



WIRED

Cost-Effective Clock System Uses the Same CAT 5/6 Cable as the Speakers & Call-In Switches!

Valcom's synchronized clocks provide the single, facility wide time standard that is so important in managing an organization's daily schedule.

The low energy circuit design permits using CAT 5/6 cable for quick, inexpensive installation with 2-wire correction for instantaneous time corrections following power outages and change to daylight saving time.

DIGITAL

▶ Wall, Flush or Double Mount, *Black*

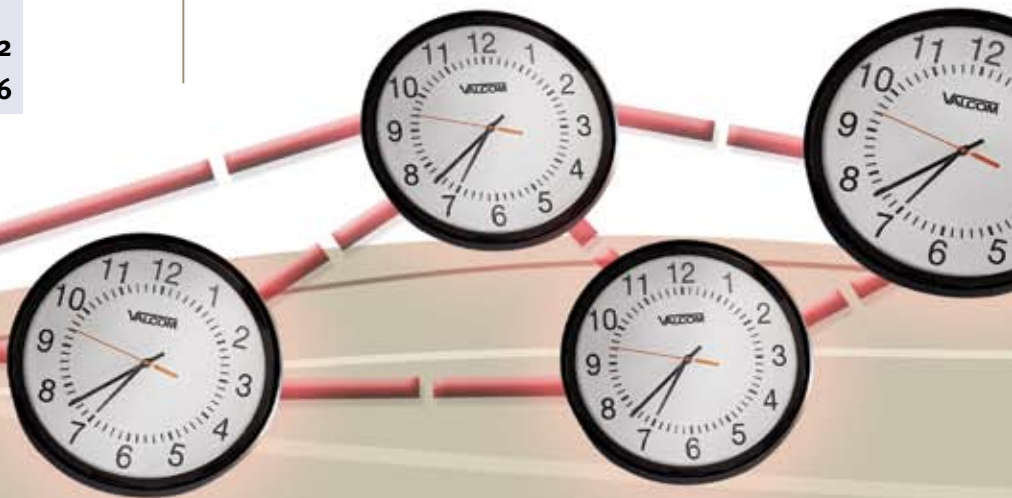
24V	110VAC/24V
2.5" V-D2425	2.5" V-D11025
4.0" V-D2440	4.0" V-D11040



ANALOG

▶ Surface Mount, *Black*

24V	110V
12" V-A2412	12" V-A11012
16" V-A2416	16" V-A11016



Clock Accessories

GPS



BAFFLES

Baffle for a 2.5" Digital Clock and an 8" Speaker **V-CSB25**

Baffle for a 12" Analog Clock and an 8" Speaker **V-CSB125**

BACKBOXES (Not Pictured)

Recessed Mount **V-CSBRB**

Surface Mount **V-CSBFB**

SPEAKER ASSEMBLIES

8" Speaker w/o Grille w/Amplifier **VSA-1020C**

8" 45 ohm Speaker 4 Volume Levels **V-936418**

8" 25/70 Volt Speaker **V-936400**



TIMER CONTROL BOX

Chronograph Timer Control Box (for V-D11040)..... **V-CDT**



CLOCK PROTOCOL INTERFACE

Digital Clock Protocol Interface (for 24V Clocks)..... **V-DCPI**



GPS MASTER CLOCK

Valcom GPS Master Clock..... **V-GPS**

Valcom GPS Master Clock (Wireless)..... **V-GPS-TX**



CLOCK DRIVER

6 Amp 2 Wire Clock Driver..... **V-VCU**

(Clock Interface Controller Kit for 24V Clocks)

2-Wire Headend Clock Driver Packages..... **V-DCH**

(2 Rack Unit or Wall Mount for 24V Clocks)



WIRE-GUARD

Our Heavy Duty Welded-Steel Wire-Guards Provide Protection for Clocks in Gymnasiums & Other Potential High Damage Areas



12" Wire-Guard for Analog Clocks **V-WGA12**

16" Wire-Guard for Analog Clocks **V-WGA16**

4" Wire-Guard for Digital Clocks **V-WGD4**

WIRELESS MASTER CLOCK TRANSCIEVER & REPEATER

Wireless Master Clock Transceiver..... **V-WMC**

Wireless Master Clock Repeater..... **V-WMCR**



EASY WAYS TO MOUNT CLOCKS

Analog Clock Mounts -

▶ Clock Surface Mount Ring

for 12" Analog Clocks..... **V-SMR12**

for 16" Analog Clocks..... **V-SMR16**



Mount two clocks to view from both ends of a hallway

▶ Double Mount Bracket

for 12" Analog Clocks..... **V-BDM12-4**

for 16" Analog Clocks..... **V-BDM16-4**

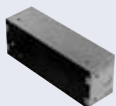


Digital Clock Mounts -

▶ Flush Mount Housing

for 2.5" Digital Clock..... **V-FM25**

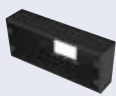
for 4.0" Digital Clock..... **V-FM40**



▶ Surface Mount Housing

for 2.5" Digital Clock..... **V-SM25**

for 4.0" Digital Clock..... **V-SM40**



Mount two clocks to view from both ends of a hallway

▶ Double Mount Bracket

for 2.5" Digital Clock..... **V-DM25-4**

for 4.0" Digital Clock..... **V-DM40-4**



Our Low Energy Circuit Design
Lets You Use Inexpensive Cat 5/6 Cable!



Quick & Easy Product Index

Basic System Products

STEP 1 Select A Page Control

Description Part # VPU Page #

ANALOG PAGE CONTROLS

2000 SERIES™ One-Way

1 Zone.....	V-2000A	+12	6
1 Zone Enhanced.....	V-2001A	+20	6
3 Zone.....	V-2003A	+20	6
Optional Plug-In Talkback Card for V-2003A.....	V-9953	-10	6
6 Zone.....	V-2006A	+30	6
Optional Plug-In Talkback Card for V-2006A.....	V-9956	-10	6
9 Zone One-Way All Call.....	V-1109RTVA	-6	6

2000 SERIES™ Talkback

3 Zone.....	V-2003AHF	+10	6
6 Zone.....	V-2006AHF	+20	6

DualPath

24 Zones Wall Mount.....	V-2924A	0	7
Add 24 Zones (Up to 3 on V-2924A) Wall Mount.....	V-2925A	0	7

DualPath V-2924A Accessories

Option Card.....	V-2926	0	7
Option Card w/Time Event Scheduler.....	V-2928	0	7
Clock Relay Card.....	V-CIO	0	7
Clock Control Card.....	V-2927	0	7
Clock Correction Kit.....	V-CLK2924	0	7

MultiPath See Accessories Listed on Page 32

24 Zones Wall Mount.....	V-PW24	0	7
48 Zones Wall Mount.....	V-PW48	0	7
24 Zones Rack Mount.....	V-PR24	0	7
48 Zones Rack Mount.....	V-PR48	0	7
72 Zones Rack Mount.....	V-PR72	0	7
96 Zones Rack Mount.....	V-PR96	0	7

Station Level/FXS Adapters

Digital 1 Zone One-Way Page Adapter.....	V-9970	-4	7
Expandable Station Page Adapter.....	V-9940	-4	7
PagePal™ Interface.....	V-5335700	0	7

STEP 2 Select Speakers & Horns

SPEAKERS

One-Way Ceiling w/Built-In Amplifier & Volume Control

P-Tec™ Ceiling Speaker White.....	V-1001	-1	8
2' x 2' Lay-In Ceiling w/Backbox, White.....	V-9022*	-1	8
2' x 2' Lay-In European Version.....	V-9022-EC*	-1	8
2' x 2' Lay-In Dual-Input w/Backbox.....	V-9028*	-1	8
4" Ceiling Speaker White.....	V-1010C*	-1	9
8" Ceiling Speaker White.....	V-1020C*	-1	9
8" Ceiling Speaker Dual-Input White.....	V-1220*	-1	9
8" Clean Room Ceiling Speaker White.....	V-1040*	-1	9
4" Recessed w/Mounting Ring & Rails.....	V-1011-MR	-1	9
8" Recessed w/Backbox & Rails.....	V-1012-BB	-1	9
8" Square Ceiling Speaker White.....	V-1920C*	-1	9
Surface Mount Ceiling Vandal-Resistant.....	V-9010-W*	-1	9

Description Part # VPU Page #

Talkback Ceiling

8" Square Ceiling Speaker White.....	V-CTSQPK*	0	9
P-Tec™ Ceiling Speaker White.....	V-1070	0	8
8" Ceiling Speaker White.....	V-1060A*	0	9
8" Ceiling Speaker w/LED, White.....	V-1060B*	0	9
2' x 2' Lay-In Ceiling Spkr w/Backbox.....	V-9062*	0	8

Round Speaker Mounting Hardware

Bridge for 4" Speaker (5 Pack).....	V-9904M-5	N/A	9
Must Use V-9904M-5 Bridge & V-9915M-5 Backbox Together			
Bridge for 8" Speaker (5 Pack).....	V-9914M-5	N/A	9
Backboxes for 4" & 8" (5 Pack).....	V-9915M-5	N/A	9
Bridge/Backbox Combo for 8".....	V-9916M	N/A	9
Pre-Construction Bridge Metal (10 Pack).....	V-9912M-10	N/A	9
Post-Const. Mount Ring Plastic (12 Pack).....	V-9912P-12	N/A	9

Optional Square Speaker Backbox

Square Flush Mount Backbox Metal.....	V-1992	N/A	9
Square Surface Mount Backbox Metal.....	V-1991	N/A	9

Speaker Assemblies

8" Square Grille.....	V-936480	N/A	9
8" Speaker w/o Grille w/Amplifier.....	VSA-1020C	-1	9
8" 45 ohm Speaker 4 Volume Levels.....	V-936418	0	9
8" 25/70 Volt Speaker.....	V-936400	0	9

One-Way Wall w/Built-In Amplifier & Volume Control

Wall Black.....	V-1016-BK	-1	10
Wall White.....	V-1016-W	-1	10
Wall Woodgrain Brown.....	V-1023C	-1	10
Wall Woodgrain Light.....	V-1022C	-1	10
Wall Gray Metal (Paintable).....	V-1052C*	-1	10
Bi-Directional Corridor Brown.....	V-1027C	-1	10
Bi-Directional Corridor Light.....	V-1026C	-1	10
Bi-Directional Corridor White.....	V-1026C-W	-1	10
Corner Woodgrain Brown.....	V-1025C	-1	10
Corner Woodgrain Light.....	V-1024C	-1	10
Corner Gray Metal (Paintable).....	V-1054*	-1	10
Dual-Input Wall Wood Light.....	V-1222	-1	10
Dual-Input Corner Woodgrain Light.....	V-1224	-1	10
Dual-Input Bi-Directional Corridor Light.....	V-1226	-1	10
Slimline™ Wall Speaker.....	V-1042+*	-1	10

Talkback Wall

Wall Black.....	V-1061-BK	0	10
Wall White.....	V-1061-W	0	10
Wall Woodgrain Brown.....	V-1063A	0	10
Wall Woodgrain Light.....	V-1062A	0	10
Wall Gray Metal (Paintable).....	V-1071*	0	10
Dual-Input Wall Wood Light w/LED.....	V-1062B	0	10
Corner Woodgrain Brown.....	V-1065A	0	10
Corner Woodgrain Light.....	V-1064A	0	10
Corner Gray Metal (Paintable).....	V-1055*	0	10
Bi-Directional Corridor Brown.....	V-1067A	0	10
Bi-Directional Corridor Light.....	V-1066A	0	10
Bi-Directional Corridor White.....	V-1066A-W	0	10
Slimline™ Wall Speaker.....	V-1046+*	0	10

SPEAKER COLORS: *Speaker Available in Custom Colors... and some + Available in BK, GY, W, BR, ++ Available in W, GY, BK, +++ Available in W, GY, BG

DescriptionPart #VPU Page #

Track-Style Speakers w/Built-In Amplifier & Volume Control

1-Watt, One-Way	V-1013B++*	-1	11
1-Watt, One-Way	V-1013B-WW	-1	11
5-Watt, One-Way	V-1014B++*	-6	11

Pendant Speakers w/Built-In Amplifier & Volume Control

5-Watt, One-Way	V-1015B++*	-6	11
5-Watt, One-Way	V-1015B-WW	-6	11
Talkback	V-1019B++*	0	11
Optional 6' Extension Chain Black	V-1093-BK	N/A	11

High-Fidelity Signature Series™ Speakers One-Way

2' x 2' Lay-In Ceiling w/Built-In Backbox	V-1422*	-4	12
2' x 2' Lay-In European Version	V-1422-EC*	-4	12
8" Ceiling Speaker	V-1420*	-4	12
Bridge/Backbox (For V-1420)	V-9816M	N/A	12
In-Wall Speaker (Paintable)	V-1450*	-4	12
Monitor Speaker Shelf or Wall Mount	V-1440+*	-4	12
Optional Mounting Bracket (For V-1440)	V-9804	N/A	12

SPECIALTY SPEAKERS

Doorplate Speakers Weather-Resistant Talkback Speakers

Flush Mount Brass	V-1072A-BRASS	0	13
Flush Mount Stainless Steel	V-1072A-ST	0	13
Flush Mount LED Brass	V-1072B-BRASS	0	13
Flush Mount LED Stainless Steel	V-1072B-ST	0	13
Flush Mount Vandal-Proof (Paintable)	V-1073*	0	13
Surface Mount	V-1074	0	13

Misc Specialty Speakers

Desktop/Wall Speaker One-Way	V-763++	-1	13
Desktop/Wall Speaker Talkback	V-762++	0	13
Desktop/Wall Speaker Talkback Push Button	V-764++	0	13
Surface Mount Ceiling Vandal-Resistant, One-Way	V-9010-W*	-1	13
Spot SoundMasking Speaker™ w/Noise Generator 2' x 2' Lay-In Ceiling	V-9422*	0	13
Spot SoundMasking 2' x 2' European Version	V-9422-EC*	0	13
Bi-Directional One-Way Beige	V-1050C	-6	13
Explosive Atmospheres 7-Watt Gray	V-1039A	-20	13
Explosive Atmospheres Talkback Gray	V-1069A	0	13

HORN SPEAKERS

One-Way w/Built-In Amplifier & Volume Control

5-Watt, Horn Beige	V-1030C	-5	14
5-Watt, Horn Gray	V-1030C-GY	-5	14
5-Watt, Marine White	V-1030M	-5	15
15-Watt, Marine White	V-1036M	-15	15
15-Watt, Horn Beige	V-1036C	-15	14
15-Watt, Horn Gray	V-1036C-GY	-15	14
30-Watt, Horn Beige	V-1038	VP-2048C	14
FlexHorn	V-1080+++	-3	15

Talkback

Horn Beige	V-1048C	0	14
Horn w/LED Beige	V-1048B	0	14
Horn Gray	V-1048C-GY	0	14
Marine White	V-1048M	0	15
Marine White	V-1048-W	0	15
FlexHorn™	V-1090+++	0	15

Optional FlexHorn Accessories

Vandal-Resistant Enclosure w/Faceplate Stainless Steel	V-9805	N/A	15
Vandal-Resistant Faceplate Stainless Steel	V-9806	N/A	15

STEP 3 Select A Power Supply

DescriptionPart #VPU Page #

POWER SUPPLIES

-24 Vdc Switching

1 Amp, Wall Mount	VP-1124(-EC, -UK)	+20	16
2 Amp, Wall Mount	VP-2124A(-EC, -UK)	+40	16
4 Amp, -24/-48Vdc	VP-4124(-E)	+80	16
6 Amp, Wall Mount	VP-6124(-E)	+120	16
12 Amp, Wall Mount	VP-12124	+240	16

Power Supply Accessories

Shelf Mount (Holds one each of VP-4124 or VP-6124)	VP-9202	N/A	16
--	---------	-----	----

-24 Vdc/120Vac

0.25 Amp UnFiltered	VP-324	+6	17
0.6 Amp Filtered	VP-624B	+12	17

Special Purpose 48 Vdc

2 Amp Filtered	VP-2048C	0	17
400 mA 12 V, UnFiltered	VP-412A	0	17

BackUp Power

Battery Back-Up Power	VPB-260	0	17
Battery Back-Up Charger	VP-6124-UPS	0	17
Battery Box w/Batteries	VBB-1424	0	17

230VAC Power Supplies

- EC European Power Supply (Plug Included)
- E Power Supply
- UK United Kingdom Power Supply (Plug Included)

Add-On Products

DescriptionPart #VPU Page #

DOOR ENTRY/INTERCOMS

Single Door Answering Control

Talkback Communication Only (No Door Unlock)	V-2900	Power Inc.	18
--	--------	------------	----

Door Unlocking Controls

Single Door	V-2901A	-12	18
Four Door	V-2904	-12	18
DoorPhone™ Speaker Controller	V-5324001	0	18
Station DoorPhone™	V-5324004	0	18

Doorplate Speakers Weather-Resistant Talkback Speakers

Flush Mount Brass	V-1072A-BRASS	0	18
Flush Mount Stainless Steel	V-1072A-ST	0	18
Flush Mount LED Brass	V-1072B-Brass	0	18
Flush Mount LED Stainless Steel	V-1072B-ST	0	18
Flush Mount Vandal-Proof (Paintable)	V-1073	0	18
Surface Mount	V-1074	0	18

INTERCOM SYSTEMS

DualPath

24 Zones Wall Mount	V-2924A	0	19
Add 24 Zones (Up to 3 on V-2924A) Wall Mount	V-2925A	0	19

DualPath Accessories

Option Card	V-2926	0	19
Option Card w/Time Event Scheduler	V-2928	0	19
Clock Relay Card	V-C10	0	19
Clock Control Card	V-2927	0	19
Clock Correction Kit	V-CLK2924	0	19

Talkback Intercom Systems Continued Page 32



TALKBACK INTERCOM SYSTEMS

<u>MultiPath Software-Driven</u>			
24 Zones	Wall Mount	V-TW24	0 19
48 Zones	Wall Mount	V-TW48	0 19
24 Zones	Rack Mount	V-TR24	0 19
48 Zones	Rack Mount	V-TR48	0 19
72 Zones	Rack Mount	V-TR72	0 19
96 Zones	Rack Mount	V-TR96	0 19

<u>PBX Loop Start Trunk, Electronic Key Line, Single Line Phone</u>			
1 Zone Talkback		V-9941A	-6 19
9 Zones Talkback		V-1109RTHF	-6 19

MULTIPATH ACCESSORIES

<u>MultiPath Talkback Speakers</u>			
8" Ceiling Speaker w/Taps (6/Pack)		V-C806PK*	0 20
8" Wall Speaker w/Taps, Gray Metal (Paintable)		V-WTGY*	0 20
FlexHorn™		VC-1090+++	0 20
Optional Vandal-Resis. Enclosure w/Faceplate Stainless Steel		V-9805	0 20
2' x 2' Lay-In Ceiling w/Backbox		V-CTL*	0 20

<u>Expansion Cards</u>			
CPU Card W/2 V-SLC Cards (4 links)		V-CPU4	0 20
Serial Card		V-SER	0 20
24 Point One-Way Paging Exp. Card		V-STX	0 20
24 Point Talkback Intercom Exp. Card		V-TCM	0 20

<u>Accessories</u>			
Modem Kit External Modem 33.6k		VCMDM	0 20
Program Distribution Panel		V-PDP	0 20
SLIC Card - 2 Telephone Interface Circuits		V-SLC	0 20
Music - AM/FM CD Control Panel w/VP-624		V-RDP	0 20
Universal Relay Interface		V-URI	0 20
One-Way Paging Adapter		V-LPT	0 20
Emergency/Normal Call-In Switch Stainless Steel		V-2970	0 20
Push Button Call-In Switch (6/Pack)		V-2972PK	0 20

<u>Mounting</u>			
9 Position Card Cage Rack Mount		V-MCRK	0 20
4 Position Wall Mount Rack		V-MWRK	0 20

<u>Backplane Cables</u>			
4 Position Feature Cards		VC40R-4	0 20

<u>Includes Backplane Terminator:</u>			
8 Position Feature Cards		VC40R-8T	0 20
9 Position Feature Cards		VC40R-9T	0 20
16 Position Feature Cards		VC40R-16T	0 20

<u>Connections</u>			
Clock Control Interface Pkg		V-CLK	0 20
Large LED Display Package		V-DSP	0 20

<u>Power Supplies</u>			
6 Amp Positive 24 Vdc Wall Mount		V-C6124P	0 20

IP SOLUTIONS

<u>Audio Ports (Line Level -10dbm)</u>			
1 Audio Port NETWORKED		VIP-801	0 21
2 Audio Ports DUAL NETWORKED		VIP-802	0 21
4 Audio Ports QUAD NETWORKED		VIP-804	0 21

<u>FXS Ports (Station Ports)</u>			
1 FXS Port ENHANCED NETWORKED		VIP-811	0 21
2 FXS Ports DUAL ENHANCED NETWORKED		VIP-812	0 21
4 FXS Ports QUAD ENHANCED NETWORKED		VIP-814	0 21

<u>FXO Ports (Loop Start)</u>			
1 FXO Port ENHANCED NETWORKED		VIP-821	0 21
2 FXO Ports DUAL ENHANCED NETWORKED		VIP-822	0 21
4 FXO Ports QUAD ENHANCED NETWORKED		VIP-824	0 21

SIP PAGING SYSTEMS

<u>SIP Paging Gateway 200 Series Page Controls</u>			
Voice Access to 1 Zone of One-Way Analog Paging Plus 8 Zones of IP Paging		VIP-201	0 22
Voice Access to 4 Zones of One-Way Analog Paging Plus 8 Zones of IP Paging		VIP-204	0 22

SIP PAGING SPEAKERS

<u>SIP Ceiling Speakers One Way</u>			
8" Ceiling Speaker		VIP-120*	0 22
2' x 2' Lay-In w/Integral Backbox		VIP-402*	0 22
2' x 2' Lay-In European Version		VIP-402-EC*	0 22

<u>SIP Wall Speakers One-Way</u>			
Wall Speaker, Gray Metal (Paintable)		VIP-410*	0 22
Wall Speaker/Digital Clock Surface Mount		VIP-411-DS	0 22
Wall Speaker/Digital Clock Flush Mount		VIP-412-DF	0 22

<u>SIP Horns One-Way</u>			
IP FlexHorn™ w/Long Line Extender		VIP-480L+++	0 22
Optional Vandal-Resistant Enclosure w/Faceplate Stainless Steel		V-9805	N/A 22
5-Watt High-Efficiency Horn w/Long Line Extender		VIP-130L+++	0 22

SIP DOORPLATE SPEAKERS

<u>Intercom/Doorplate Speaker</u>			
Flush Mount w/Call Button/LED Brass		VIP-172L-BRASS	0 23
Flush Mount w/Call Button/LED Stainless Steel		VIP-172L-ST	0 23
Flush Mount Vandal-Proof w/Call Button & LED (Paintable)		VIP-172L-VR*	0 23

<u>Power Supplies</u>			
Power Supply 0.25 Amp		VIP-324	0 23

<u>Accessories</u>			
NETWORKED Input & Relay Module		VIP-848	0 23

<u>IP Tie Line</u>			
IP Tie Line - 2 Channel		VIP-854	0 23

IN-WALL MODULAR MIXER

<u>In-Wall Modular Mixer</u>			
In-Wall Modular Mixer		V-9983-W	-1 24
In-Wall Modular Mixer, w/Remote		V-9985-W	-1 24
In-Wall Remote Module		V-9984-W	-1 24

SYSTEM ENHANCEMENTS

<u>Call-In Switches</u>			
Volume Control, Stainless Steel		V-2971	0 25
Volume Control, White		V-2991-W	0 25

<u>Speaker Volume Controls</u>			
Speaker Volume Control, Stainless Steel		V-1092	0 25
Speaker Volume Control, White		V-2992-W	0 25

<u>Paging Expansion</u>			
Page Port PreAmp/Expander, Stainless Steel		V-1094A	-1 25
Page Port PreAmp/Expander, White		V-2994-W	-1 25

<u>25/70/100 Volt Paging Expansion</u>			
70 Volt Expander, Stainless Steel		V-1095	0 25
70 Volt Expander, White		V-2995-W	0 25

Misc System Enhancements

Noise Sensing Volume Control	V-9933A	-2	25
Remote Microphone (Must be used w/V-9933A)	V-9934	0	25
Input Matching Transformer	VMT-1	0	25
FM Tuner	V-2952	-5	25
Music-4-Life™	Visit www.valcom.com/	N/A	25
Digital Sound Level Meter Pro II	V-9992	0	25

Message Units

Stored Message/Mic Panel	V-9908	0	26
Multi-Messenger USB Device	V-9989	0	26
USB Message-On-Hold Device	V-9988	0	26
Stacking Feedback Eliminator	V-9964	-6	26

Microphone Adapters

Microphone Adapter	V-9939B	-1	26
--------------------	---------	----	----

Microphones

Desk Paging Microphone	V-400		26
Dynamic Noise Canceling Microphone	V-420		26
Gooseneck Microphone	V-450		26
Multi-Zone Microphone	V-5335405	Power Inc.	26

Strobes

ADA Compliant Strobe	V-5580041	0	27
Auxiliary Relay Unit (Must be used w/V-5580041)	V-9955	0	27
Expansion Board (for V-9955)	V-9957	0	27

Ringer Horns

Loud Warble Horn	V-9925A	-10	27
Loud Ringer & Warble Horn	V-9945A	Power Inc.	27

Adds Tones Over Paging

Multi-Tone Generator	V-9927A	-2	27
6 Line Audible Ring Unit	V-9936A	-4	27
C.O. Audible Ringer	V-9924C	-6	27
Code Call Unit	V-9923B	-6	27

VALCOM CLOCKS

WIRELESS

Digital Wall, Flush or Double Mount, Black

24V, 2.5"	V-DW2425	0	28
24V, 4.0"	V-DW2440	0	28
110V, 2.5"	V-DW11025	0	28
110V, 4.0"	V-DW11040	0	28

Analog Surface Mount, Black

24V, 12"	V-AW2412	0	28
24V, 16"	V-AW2416	0	28
110V, 12"	V-AW11012	0	28
110V, 16"	V-AW11016	0	28

Battery Operated Analog Surface Mount, Black

110V, 12"	V-AW12	0	28
110V, 16"	V-AW16	0	28

WIRED

Digital Wall, Flush or Double Mount, Black

24V, 2.5"	V-D2425	0	28
24V, 4.0"	V-D2440	0	28
110VAC/24V, 2.5"	V-D11025	0	28
110VAC/24V, 2.5"	V-D11040	0	28

Analog Surface Mount, Black

24V, 12"	V-A2412	0	28
24V, 16"	V-A2416	0	28
110V, 12"	V-A11012	0	28
110V, 16"	V-A11016	0	28

CLOCK ACCESSORIES

Baffles

Digital Baffle, Baffle for a 2.5" Digital Clock and an 8" Speaker (Paintable)	V-CSB25*	0	29
Analog Baffle, Baffle for a 12" Analog Clock and an 8" Speaker (Paintable)	V-CSB12S*	0	29

Backboxes

Recessed Mount (Paintable)	V-CSBRB*	0	29
Surface Mount (Paintable)	V-CSBFB*	0	29

Speaker Assemblies

8" Speaker w/o Grille w/Amplifier	VSA-1020C	-1	29
8" 45 ohm Speaker 4 Volume Levels	V-936418	-1	29
8" 25/70 Volt Speaker	V-936400	-1	29

Timer Control Box

Chronograph Timer Control Box (for V-D11040)	V-CDT	0	29
--	-------	---	----

Clock Protocol Interface

Digital Clock Protocol Interface (for 24V Clocks)	V-DCPI	0	29
---	--------	---	----

GPS Master Clock

Valcom GPS Master Clock	V-GPS	0	29
Valcom GPS Master Clock (Wireless)	V-GPS-TX	0	29

Clock Driver

6 Amp 2 Wire Clock Driver	V-VCU	0	29
2-Wire Headend Clock Driver Packages	V-DCH	0	29

Wire-Guard

12" Wire-Guard for Analog Clock	V-WGA12	0	29
16" Wire-Guard for Analog Clock	V-WGA16	0	29
4" Wire-Guard for Digital Clocks	V-WGD4	0	29

Wireless Master Clock Transceiver & Repeater

Wireless Master Clock Transceiver	V-WMC	0	29
Wireless Master Clock Repeater	V-WMCR	0	29

Analog Clock Mounts

Clock Surface Mount Ring for 12" Analog Clock	V-SMR12	0	29
Clock Surface Mount Ring for 16" Analog Clock	V-SMR16	0	29
Double Mount Bracket for 12" Analog Clock	V-BDM12-4	0	29
Double Mount Bracket for 16" Analog Clock	V-BDM16-4	0	29

Digital Clock Mounts

Flush Mount Housing for 2.5" Digital Clock	V-FM25	0	29
Flush Mount Housing for 4.0" Digital Clock	V-FM40	0	29
Surface Mount Housing for 2.5" Digital Clock	V-SM25	0	29
Surface Mount Housing for 4.0" Digital Clock	V-SM40	0	29
Double Mount Bracket for 2.5" Digital Clock	V-DM25-4	0	29
Double Mount Bracket for 4.0" Digital Clock	V-DM40-4	0	29

Quick & Easy Numerical Index

Part #	Page #	Part #	Page #	Part #	Page #	Part #	Page #	Part #	Page #	Part #	Page #
V-400.....	26	V-1061-W.....	10	V-2925A.....	7,19	V-9984-W.....	24	V-DW11040.....	28	VIP-130L+++.....	22
V-420.....	26	V-1062A.....	10	V-2926.....	7,19	V-9985-W.....	24	V-DW2425.....	28	VIP-172L-BRASS.....	23
V-450.....	26	V-1062B.....	10	V-2927.....	7,19	V-9988.....	26	V-DW2440.....	28	VIP-172L-ST.....	23
V-762++.....	13	V-1063A.....	10	V-2928.....	7,19	V-9989.....	26	V-FM25.....	29	VIP-172L-VR*.....	23
V-763++.....	13	V-1064A.....	10	V-2952.....	25	V-9992.....	25	V-FM40.....	29	VIP-201.....	22
V-764++.....	13	V-1065A.....	10	V-2970.....	20	V-5324001.....	18	V-GPS.....	29	VIP-204.....	22
V-1001.....	8	V-1066A.....	10	V-2971.....	25	V-5324004.....	18	V-GPS-TX.....	29	VIP-324.....	23
V-1010C*.....	9	V-1066A-W.....	10	V-2972PK.....	20	V-5335405.....	26	V-LPT.....	20	VIP-402*.....	22
V-1011-MR.....	9	V-1067A.....	10	V-2991-W.....	25	V-5335700.....	7	V-MCRK.....	20	VIP-402-EC*.....	22
V-1012-BB.....	9	V-1069A.....	13	V-2992-W.....	25	V-5580041.....	27	V-MWRK.....	20	VIP-410*.....	22
V-1013B++ *.....	11	V-1070*.....	8	V-2994-W.....	25	V-936400.....	9,29	V-PDP.....	20	VIP-411-DS.....	22
V-1013B-WW.....	11	V-1071*.....	10	V-2995-W.....	25	V-936418.....	9,29	V-PR24.....	7	VIP-412-DF.....	22
V-1014B++ *.....	11	V-1072A-BRASS.....	13,18	V-9010-W*.....	9,13	V-936480.....	9	V-PR48.....	7	VIP-480L+++.....	22
V-1015B++ *.....	11	V-1072A-ST.....	13,18	V-9022*.....	8	V-A2412.....	28	V-PR72.....	7	VIP-801.....	21
V-1015B-WW.....	11	V-1072B-BRASS.....	13,18	V-9022-EC*.....	8	V-A2416.....	28	V-PR96.....	7	VIP-802.....	21
V-1016-BK.....	10	V-1072B-ST.....	13,18	V-9028*.....	8	V-A11012.....	28	V-PW24.....	7	VIP-804.....	21
V-1016-W.....	10	V-1073*.....	13,18	V-9062*.....	8	V-A11016.....	28	V-PW48.....	7	VIP-811.....	21
V-1019B++ *.....	11	V-1074.....	13,18	V-9422*.....	13	V-AW11012.....	28	V-RDP.....	20	VIP-812.....	21
V-1020C*.....	9	V-1080+++.....	15	V-9422-EC*.....	13	V-AW11016.....	28	V-SER.....	20	VIP-814.....	21
V-1022C.....	10	V-1090+++.....	15	V-9804.....	12	V-AW12.....	28	V-SLC.....	20	VIP-821.....	21
V-1023C.....	10	V-1092.....	25	V-9805.....	15,20,22	V-AW16.....	28	V-SM25.....	29	VIP-822.....	21
V-1024C.....	10	V-1093-BK.....	11	V-9806.....	15	V-AW2412.....	28	V-SM40.....	29	VIP-824.....	21
V-1025C.....	10	V-1094A.....	25	V-9816M.....	12	V-AW2416.....	28	V-SMR12.....	29	VIP-848.....	23
V-1026C.....	10	V-1095.....	25	V-9904M-5.....	9	V-BDM12-4.....	29	V-SMR16.....	29	VIP-854.....	23
V-1026C-W.....	10	V-1109RTHF.....	19	V-9908.....	26	V-BDM16-4.....	29	V-STX.....	20	VMT-1.....	25
V-1027C.....	10	V-1109RTVA.....	6	V-9912M-10.....	9	V-C6124P.....	20	V-TCM.....	20	VP-1124.....	16
V-1030C.....	14	V-1220*.....	9	V-9912P-12.....	9	V-C806PK*.....	20	V-TR24.....	19	VP-1124-EC.....	16
V-1030C-GY.....	14	V-1222.....	10	V-9914M-5.....	9	V-CDT.....	29	V-TR48.....	19	VP-1124-UK.....	16
V-1030M.....	15	V-1224.....	10	V-9915M-5.....	9	V-CIO.....	7,19	V-TR72.....	19	VP-12124.....	16
V-1036C.....	14	V-1226.....	10	V-9916M.....	9	V-CLK.....	20	V-TR96.....	19	VP-2048C.....	17
V-1036C-GY.....	14	V-1420*.....	12	V-9923B.....	27	V-CLK2924.....	7,19	V-TW24.....	19	VP-2124A.....	16
V-1036M.....	15	V-1422*.....	12	V-9924C.....	27	V-CPU4.....	20	V-TW48.....	19	VP-2124A-EC.....	16
V-1038.....	14	V-1422-EC*.....	12	V-9925A.....	27	V-CSB12S*.....	29	V-URI.....	20	VP-2124A-UK.....	16
V-1039A.....	13	V-1440+ *.....	12	V-9927A.....	27	V-CSB25*.....	29	V-VCU.....	29	VP-324.....	17
V-1040*.....	9	V-1450*.....	12	V-9933A.....	25	V-CSBFB*.....	29	V-WGA12.....	29	VP-412A.....	17
V-1042+ *.....	10	V-1920C*.....	9	V-9934.....	25	V-CSBRB*.....	29	V-WGA16.....	29	VP-4124.....	16
V-1046+ *.....	10	V-1991.....	9	V-9936A.....	27	V-CTL *.....	20	V-WGD4.....	29	VP-4124-E.....	16
V-1048B.....	14	V-1992.....	9	V-9939B.....	26	V-CTSQPK*.....	9	V-WMC.....	29	VP-6124.....	16
V-1048C.....	14	V-2000A.....	6	V-9940.....	7	V-D11025.....	28	V-WMCR.....	29	VP-6124-E.....	16
V-1048C-GY.....	14	V-2001A.....	6	V-9941A.....	19	V-D11040.....	28	V-WTGY*.....	20	VP-6124-UPS.....	17
V-1048M.....	15	V-2003A.....	6	V-9945A.....	27	V-D2425.....	28	VBB-1424.....	17	VP-624B.....	17
V-1050C.....	13	V-2003AHF.....	6,19	V-9953.....	6	V-D2440.....	28	VC-1090+++.....	20	VP-9202.....	16
V-1052C*.....	10	V-2006A.....	6	V-9955.....	27	V-DCH.....	29	VC40R-4.....	20	VPB-260.....	17
V-1054*.....	10	V-2006AHF.....	6,19	V-9956.....	6	V-DCPI.....	29	VC40R-8T.....	20	VSA-1020C.....	9, 29
V-1055*.....	10	V-2900.....	18	V-9957.....	27	V-DM25-4.....	29	VC40R-9T.....	20		
V-1060A*.....	9	V-2901A.....	18	V-9964.....	26	V-DM40-4.....	29	VC40R-16T.....	20		
V-1060B*.....	9	V-2904.....	18	V-9970.....	7	V-DSP.....	20	VCMDM.....	20		
V-1061-BK.....	10	V-2924A.....	7,19	V-9983-W.....	24	V-DW11025.....	28	VIP-120*.....	22		

See website for
Music-4-Life CD's

SPEAKER COLORS: *Speaker Available in Custom Colors... and some + Available in BK, GY, W, BR, ++ Available in W, GY, BK, +++ Available in W, GY, BG

Valcom Proudly Made in the USA

Glossary

All Call – One-way broadcast of announcements to all paging speakers in a system.

Background Music – Music played over paging speakers. Typically mutes only on the speaker(s) being paged.

Clock Tones – A single tone played over paging speakers used to indicate break time, class/shift changes or any other scheduled event.

Contact Closure – A switch closure used to activate/deactivate a device (door locks, tones, cameras).

FXO Port – Foreign Exchange Office Port - emulates a Loop Start Trunk Port on a traditional PBX. This port will connect to FXS or Analog Station Port from another piece of equipment.

FXS Port – Foreign Exchange Subscribe Port - emulates an analog station port on a traditional PBX. This port will connect to a FXO or Loop Start Trunk Port from another piece of equipment.

Group Call – One-way broadcast to a selected group of zones.

Ground Start Trunk Port – A telephone system port that connects to a "ground start" type telephone line.

IP Paging – allows overhead paging to be transported over an existing IP data network topology.

Loop Start Trunk Port – A telephone system port that connects to a "loop start" type telephone line. Same functions as FXO.

Mesh Network – a wireless network that uses repeaters which communicate to multiple other repeaters providing redundant communication paths.

MultiPath – Multiple simultaneous talkpath access method.

Night Ring/UNA Tones – A warble tone that is broadcast over paging speakers when a phone line rings after hours. Usually activated by a signal from the telephone system.

One-Way Paging – A voice page that is broadcast over speakers. Listeners hear messages but cannot reply.

Page Control – The brains of the paging system, much like the CPU (Central Processing Unit) of a computer system. Valcom Page Controls are specifically designed for telephone integration.

Page Port – One type of telephone system paging output used to activate voice paging over speakers.

DualPath – Dual talkpath access method.

SIP – Session initiation protocol, IP system interface.

Stand Alone – A paging system that is not integrated with the telephone system – usually accessed by a dedicated telephone set or microphone.

Station Port – A port on a telephone system where a system telephone connects – may be digital or analog. Same function as FXS.

Talkback Paging – A voice page that allows the listeners in the area being paged to respond directly back through the speaker providing handsfree two-way communication.

VoIP – Voice over internet protocol.

Zone – An area that can be paged independently of other areas. For instance, a warehouse may be a zone and the office area may be a zone — each zone (area) can be paged independently or simultaneously.

The World's Leading Manufacturer of Integrated Paging Systems...

VALCOM OFFERS

- Free On-Site Product Training
- Pre-Sale Design Assistance
- Large System Site Surveys at No Cost
- Easy Product Availability
- Emergency 24/7 Technical Support at 1-800-VALCOM-1
- Informative Website at www.valcom.com

LITERATURE

- Technical Documentation
- Product Installation Documents
- Marketing Sheets
- Industry Guides
- Application Briefs
- A & E Specs
- Site Survey Form

WHY CHOOSE VALCOM

- Made in the USA
- Excellent Industry Reputation
- Exceptional Customer Sales and Technical Support
- Products Designed for Structured Cabling
- Systems are Easy to Design, Install, Adjust and Use
- Highest Quality Products in the Industry

Application/Technical/Sales

800-VALCOM-1 (800-825-2661)

Headquarters

540-563-2000

Valcom, Inc. 5614 Hollins Road • Roanoke, VA 24019

www.valcom.com



VALCOM

Look for These NEW Products Throughout the Catalog!

MultiPath Page Controls & Accessories, page 7 & 19-20

PagePal™ Interface, page 7

Clock Cards for DualPath V-2924A, page 7 & 19

Easy Push/Lock Install
P-Tec™ Ceiling Speakers, page 8

Clean Room Ceiling Speaker, page 9

Square Ceiling Speaker, page 9

Pre-Construction Speaker Mounting Hardware, page 9

Gray Metal Wall & Corner Speakers-Paintable, page 10

Sleek All White Track & Pendant Speakers, page 11

Hi-Fi Signature Series™ Lay-In Ceiling Speakers, page 12

Power Supply Shelf Rack, page 16

Doorphone, page 18

IP & SIP Solutions, page 21-23

In-Wall Modular Mixers, page 24

Call-In Switches, Volume Controls,
Paging Expansion, page 25

Input Matching Transformer, page 25

Stored Message/Mic Panel, page 26

Multi-Zone Microphone
with Built-In PreAmp & Page Access, page 26

USB Multi-Messenger, page 26

ADA Compliant Strobe, page 27

Valcom's Mesh Network Clock Systems, page 28-29



Easy
Installation



VALCOM®

Application/Technical/Sales
800-VALCOM-1 (800-825-2661)

Valcom, Inc. Headquarters
5614 Hollins Road • Roanoke, VA 24019
540-563-2000

www.valcom.com